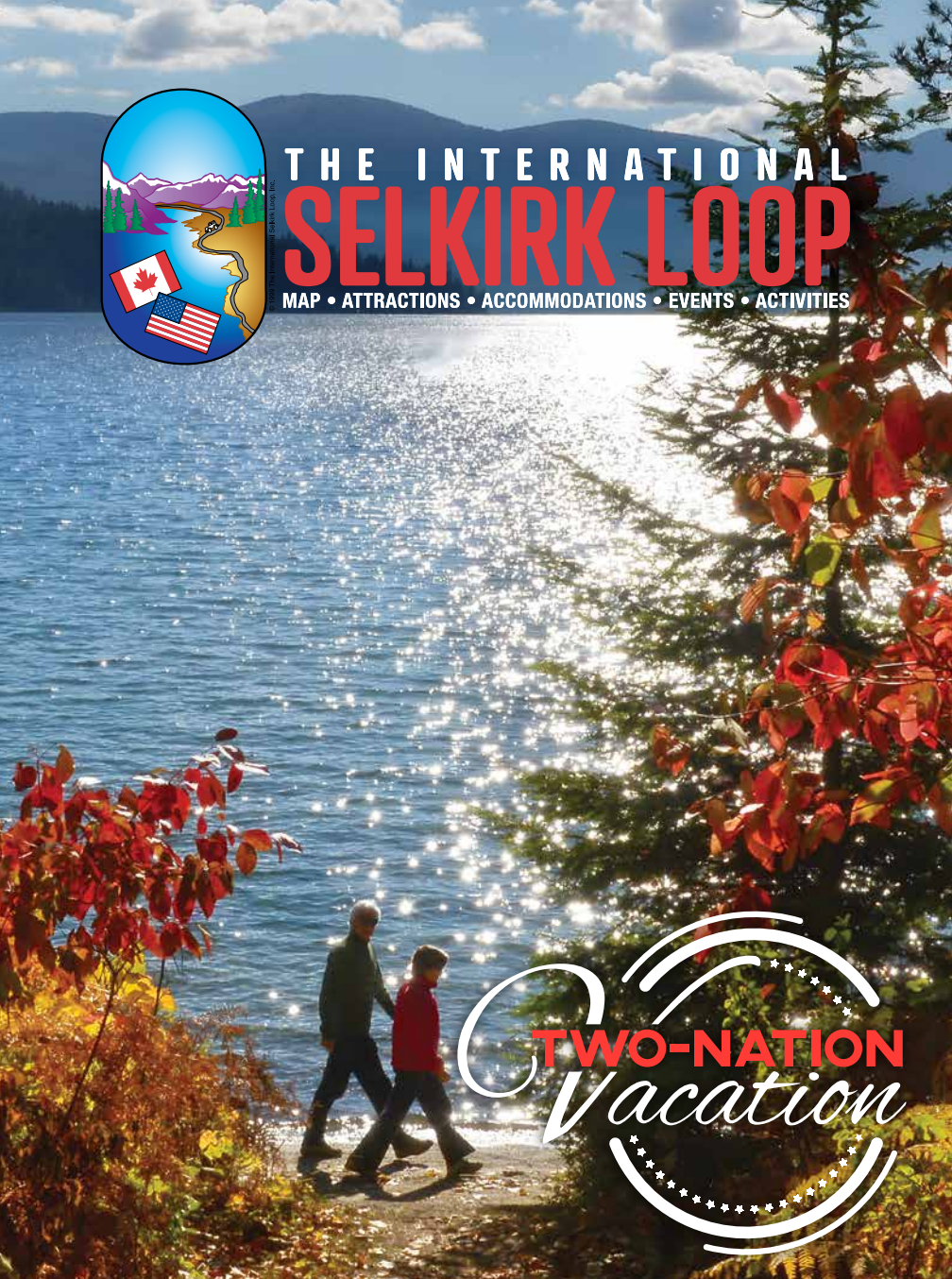




THE INTERNATIONAL SELKIRK LOOP

MAP • ATTRACTIONS • ACCOMMODATIONS • EVENTS • ACTIVITIES



TWO-NATION
Vacation

**"ONE OF THE TOP 10
SCENIC DESTINATIONS IN THE
NORTHERN ROCKIES"**



1.888.823.2626
www.selkirkloop.org



CASH IN ON ADVENTURE!

Kalispel Casino brings the latest slots and live sports betting to the gorgeous Pend Oreille River Valley. But that's not all. Extend your vacation with a stay at the adjoining RV resort, offering full hookups and cozy cottages, or outfit your adventure at Kalispel Market, a one-stop-shop for groceries, outdoor essentials, firewood, fuel, and more.

WHERE SERENITY
MEETS AMENITIES.



KALISPEL TRIBE RESERVATION ON THE
PEND OREILLE RIVER AT THE FOOT OF THE SELKIRKS

420 Qlispe River Way, Cusick, WA
1-833-881-7492 | kalispelcasino.com

2023 U.S. HOLIDAYS & IMPORTANT DATES

New Year's Day	January 1
Martin Luther King Jr. Day	January 16
President's Day	February 20
Daylight Saving Time Begins	March 12
Good Friday	April 7
Easter Sunday	April 9
Memorial Day	May 29
Independence Day	July 4
Labor Day	September 4
Columbus Day	October 9
Daylight Saving Time Ends	November 5
Veterans Day (observed)	November 10
Thanksgiving Day	November 23
Christmas Day	December 25

2023 CANADIAN HOLIDAYS & IMPORTANT DATES

New Year's Day	January 1
Daylight Saving Time Begins	March 12
Good Friday	April 7
Easter Sunday	April 9
Easter Monday	April 10
Victoria Day	May 22
Canada Day	July 1
Civic Holiday August	August 1
Labour Day	September 4
Thanksgiving	October 9
Daylight Saving Time Ends	November 5
Remembrance Day	November 10
Christmas Day	December 25
Boxing Day	December 26

CONVERSIONS: IMPERIAL-METRIC

1 mile = 1.61 km
1 acre = 0.405 hectare
1 U.S. gallon = 3.78 litres
1°F = 0.55°C
1 foot = 0.30 meter
1 pound = 0.45 kg

METRIC-IMPERIAL

1 km = 0.62 miles
1 hectare = 2.47 acres
1 litre = 0.264 US gallon
1°C = 1.8°F
1 meter = 3.28 foot
1 kg = 2.20 pounds

U.S. DESTINATIONS

Athol, Idaho	26
Bayview, Idaho	26
Blanchard, Idaho	26
Bonnors Ferry, Idaho	36
Chewelah, Washington	12
Clark Fork, Idaho	35
Colville, Washington	10
Cusick, Washington	14
Hope, Idaho	35
lone, Washington	8
Metaline/Metaline Falls, Washington	6
Moyie Springs, Idaho	35
Newport, Washington	18
Oldtown, Idaho	18
Priest Lake, Idaho	21
Priest River, Idaho	24
Sagle, Idaho	26
Sandpoint, Idaho	28
Spirit Lake, Idaho	26
Tiger, Washington	8
Troy/Libby, Montana	35
Usk, Washington	14

CANADIAN DESTINATIONS

Ainsworth Hot Springs	58
Balfour	56
Boswell	50
Castlegar	70
Crawford Bay	50
Creston	44
Erickson	42
Fruitvale/Montrose	70
Gray Creek	50
Harrop/Procter	56
Kaslo	58
Kitchener	42
Nelson	64
New Denver	58
Riondel	50
Rossland	70
Salmo	74
Silverton	58
Slocan	58
Trail	70
Wynndel	50
Yahk	42
Ymir	74

Other Information

Border Crossing Information	5
Ferry Schedule	55
Map	40-41
Winter Recreation	76-79

WELCOME TO THE INTERNATIONAL SELKIRK LOOP

Driving the International Selkirk Loop is truly a spectacular experience, as the 280-mile (450 km) international scenic byway winds around the Selkirk Mountains through Idaho and Washington, USA, and British Columbia, Canada. Often following lakes and rivers along the way, the Selkirk Loop circles an area brimming with outdoor recreation opportunities. Explore a wide variety of awe-inspiring sights and historic treasures in a two-state, two-country vacation.

In fact, the Selkirk Loop has garnered heaps of recognition. Rand McNally selected it as one of five "Best of the Roads" for its 2009 atlas. The U.S. Department of Transportation designated the

Selkirk Loop an "All American Road" in 2005. And *Sunset Magazine* named it "The West's Best Scenic Drive." So put yourself in the driver's seat for one fabulous drive chock-full of scenery and friendly towns on the International Selkirk Loop!

The book is organized into two sections.

The first half of the Selkirk Loop Travel Guide contains U.S. communities, and the second half contains Canadian communities with an overview map in the middle. The communities appear in traveling order when driving counterclockwise.

Allow a minimum of three to five days to visit the International Selkirk Loop. "Sample Itineraries" can be found at www.SelkirkLoop.org.



THE INTERNATIONAL SELKIRK LOOP

P.O. Box 920, Bonners Ferry, ID 83805 USA

1-888-823-2626 • 208-267-0822

www.SelkirkLoop.org • info@selkirkloop.org

CREDITS:

Printed in the U.S.A. by Century Publishing, Post Falls, ID
Map design by Kooke :: media + marketing, Sandpoint, ID
Cover Photo: Couple walking on the beach near Priest Lake ID, Joanie Christian Photography



Check the handy directory of businesses at the back of the travel guide organized by U.S. and Canadian communities, type and activity. They made the Selkirk Loop Travel Guide possible and all offer wonderful experiences. Be sure to tell them you are **“Doin’ the Loop.”**

Before you hit the road, **download our FREE mobile app** (iOS or Android) at www.selkirkloop.org. Once it is downloaded, the app is offline and you can interact with the map, ferry schedules, border crossing information and everything there is to see and do along the way.

Follow us on Facebook, Instagram and Twitter and share your experience and images using the hashtag **#selkirkloop**. We would love to see your **Two-Nation Vacation!**



Scenic View on the International Selkirk Loop

BORDER CROSSING TIPS

Individuals entering Canada: U.S. citizens need identification that proves two things: Citizenship and identity by way of a photo. Passports are required to reenter the United States. The following pieces of identification will serve as satisfactory proof of U.S. citizenship to enter Canada: U.S. passport or birth certificate (photocopies must be notarized), or certificate of naturalization or citizenship and photo ID such as a driver’s license.

Note that restrictions pertain to fruits, vegetables, alcohol, tobacco and firearms. For more information on Canada Customs, look up www.britishcolumbia.com.

Returning to Canada with Purchases/Goods/Gifts: Individuals returning to Canada after 24 hours can claim up to \$200 CDN worth of goods without duty; after 48 hours, the limit is \$800.

Individuals entering the United States: Only passports or Western Hemisphere Travel Initiative (WHTI)-compliant documents are acceptable for entering the United States. WHTI-compliant documents are: U.S. PASSport card, Enhanced Driver’s License, NEXUS Card, or FAST Card. www.cbp.gov or www.passportinfo.com.

Returning to the United States with Purchases/Goods/Gifts: Individuals returning to the United States in a 30-day period may bring \$800 per person of approved items without paying duty. www.cbp.gov.

Minors traveling with people who are not their parents (applies for Canada and U.S. entries): Must have written authorization from parents along with phone numbers and identification such as notarized copy of birth certificate. U.S. and Canadian citizens under age 16 need only present a birth certificate, Canadian Citizenship Card, or a naturalization certificate. Birth certificates can be an original, photocopy or certified copy.

Traveling with pets: Dog and cat owners may generally travel with healthy pets with a current rabies vaccination certificate (issued within the past 36 months).

International Border Stations on the Loop:

Washington: Metaline Falls, Highway 31 (509-446-4421) – open 8 a.m. to 4 p.m. Frontier, Highway 25 North (509-732-6215) – open 24 hours

Idaho: Porthill, Highway 1 North (208-267-5309) – open 7 a.m. to 5 p.m.; Eastport, Highway 95 North (208-267-3966) – open 24 hours

Canada: Nelway, Highway 6 (250-357-9940) – open 8 a.m. to 4 pm; Rykerts, Highway 21 (250-428-2575) – open 7 a.m. to 5 p.m.; Kingsgate, Highway 3/95 (250-424-5391) – open 24 hours; Paterson, Highway 22 (250-362-7341) – open 24 hours

The hours could be extended after this publication was printed. Please refer to our website for the most recent information.



Metaline Falls

Metaline • Metaline Falls

A surprising treasure awaits visitors of the rural areas of northeastern Washington. From the international border to the junction of Highways 31 and 20, this segment of the Selkirk Loop drive is also Washington's North Pend Oreille Scenic Byway, one of this state's prettiest scenic byways. Once accessible only by horseback or river expedition, **Metaline Falls** was one of the first pioneer settlements in Pend Oreille County. Pend Oreille is French for "ear pendant," probably named by French fur traders after a native who wore such an earring.

Metaline Falls is now home to a charming collection of well-preserved historical architecture including **The Cutter Theatre** and the **Washington Hotel**. The town was the location

for Kevin Costner's film "The Postman."

With regular cultural productions at **The Cutter Theatre** and the town-wide **Affair on Main Street** over Labor Day weekend, it's no surprise that Metaline Falls was named one of the **100 Best Small Art Towns in America**.

This region, often called the "Forgotten Corner," contains one of the most diverse populations of big game animals in the Lower 48. The recently redesigned **Mill Pond** historic site provides an interpretive walk with a trail connecting it to the **Mill Pond Campgrounds**. Nearby pristine **Sullivan Lake** features recently upgraded campground and picnic facilities. Contact the **Sullivan Lake Ranger Station** at 509-446-2681 for camping in the area, a list of

BOUNDARY DAM

Located 110 miles north of Spokane, explore the beauty, recreation, and nature of Boundary Dam. Guided tours are available Memorial Day through Labor Day.

Visit www.seattle.gov/light/tours/boundary for more details.



Seattle City Light

THE NATION'S GREENEST UTILITY



Cutter Theatre

FESTIVALS AND EVENTS METALINE – METALINE FALLS

Jan - Dec	Concerts, Plays and events at the Cutter Theatre - www.cuttertheatre.com
July	July 4th BBQ in Metaline Park
August	Tri-Town Float Down
September	The Affair on Main Street Art, Craft & Culture Festival
December	Deck the Falls Celebration
	North Pend Oreille Chamber www.npochamber.org



Gardner Cave

local day hiking and sightseeing trips as well as an interesting historical display.

Take a guided tour (reservations required) of **Gardner Cave** (Memorial-Labor Day Weekend), Washington state's third-longest limestone cave, located 11 miles north of Metaline Falls in **Crawford State Park**. Tours are conducted in the summer months. The cave is closed on Tuesdays and Wednesdays.

BUSINESS DIRECTORY

ARTS, GIFTS & ANTIQUES

- Affair on Main Street (509) 446-2449
- Cutter Theatre, The (509) 446-4108

FOOD & EATERIES

- Farmhouse Café (509) 446-2447

ORGANIZATIONS & GOVERNMENT

- North Pend Oreille Chamber of Commerce (800) 295-0671

PLACES TO STAY

- Circle Motel (509) 446-4343
- Mt. Linton RV & Trailer Park (509) 446-4553
- Pend Oreille Luxury Vacation Rentals (208) 217-0141
- USFS Sullivan Lake Ranger District (509) 446-7500

THINGS TO SEE & DO

- Affair on Main Street (509) 446-2449
- Cutter Theatre, The (509) 446-4108
- Seattle City Light - Boundary Dam Tours (509) 446-3083
- USFS Sullivan Lake Ranger District (509) 446-7500



Red Bridge

Ione • Tiger

The story of Ione is one steeped in legends of the timber industry, the railway and the lore of the Pend Oreille River. Follow the story of the mills, mines and railroads of yesteryear by stopping at designated points of interest along Highway 31 marked as **North Pend Oreille Scenic Byway**. Construction was completed on several interpretive sites along this stretch in 2014 covering many topics important to this area and are worth exploring. In 1901, the community built its first sawmill. Eight years later, the Panhandle Lumber Company employed more than 700 men. The arrival of the railroad in 1909 was almost as vital to the region's survival. But none of it would be here if it weren't for the Pend Oreille River.

Today, the community's residents celebrate the Pend Oreille's bounty every July, when **Downriver Days** arrive. The events are marked by family-friendly, river-based activities including "water skipping" of snowmobiles across the Pend Oreille River. Ione has a lovely day-use park along the water's edge. You will also find the **Lions Club Rail Riders** where you can enjoy the unique experience of a four seated, pedal powered, railroad bicycle along some of the most stunning fall scenery in the Pacific Northwest as it runs along the Pend Oreille River. First ride south through scenic pastureland then north to the impressive Box Canyon Trestle.

Sweet Creek Rest Area also offers a picnic

site, interpretive panels and a hiking trail to Sweet Creek Falls. The first part of this trail is paved with hard packed gravel to the falls - it is worth the short hike to see it.

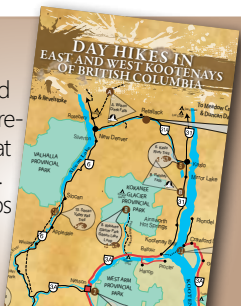
Just north of Ione is **Box Canyon Dam**. The site provides tours, camping, a swimming pond and is a great place to have a picnic.

Stop by the **Meadow Lake Wildlife Observatory** (Memorial-Labor Day Weekend) located west of Ione, where a dismantled fire lookout was reconstructed on this site as a wildlife-viewing tower.

At the junction of Highways 31 and 20, the **Tiger General Store** is all that remains of this once-thriving pioneer town. Peer into the past at the store's museum with early history of the

Day Hikes

Get off the road and into the hills to appreciate the beauty that surrounds the loop. Look for 3 trail maps [Wash., Idaho, and B.C.] produced by the Selkirk Loop



FREE at area Chamber and Visitor Centers



Rail Riders

Bald Eagle



region, including a mining display and an on-site blacksmith shop containing a lot of original items. A state designated **rest area** is open Memorial Day Weekend through Labor Day Weekend.

At the junction of Highways 31 and 20, turn west to go on the Selkirk Loop's **Flowery Trail – Little Pend Oreille Super Side Trip** (page 10).



Riverview Motel

120 Riverside Ave
Ione, WA

www.riverviewmotelionewa.com

FESTIVALS AND EVENTS IONE

June - Oct	Rail Riders-check their schedule for dates
July	Downriver Days Tri-Town Float Down Hydroplane Boat Races
August	Pend Oreille County Fair and Rodeo

North Pend Oreille Chamber (509) 446-1721
www.npochamber.org

BUSINESS DIRECTORY

ARTS, GIFTS & ANTIQUES

Cedar RV Park & Sasquatch Crossing
(509) 442-2144

PLACES TO STAY

Box Canyon Resort & Motel
(509) 442-3728 • (800) 676-8883
Cedar RV Park & Sasquatch Crossing
(509) 442-2144
Coop B&B, The (509) 442-3344
Karin's Bed & Golf / Serendipity Golf Course
(509) 442-3313
Riverview Motel (509) 442-2990

THINGS TO SEE & DO

Karin's Bed & Golf / Serendipity Golf Course
(509) 442-3313
NPOV Lions Rail Riders (844) 724-5743
Pend Oreille County Public Utility – Box Canyon Dam Tour
(509) 447-3137 • (800) 767-2823
Tiger Historical Center / Museum
(509) 442-4656



See wildlife at the Little Pend Oreille National Wildlife Refuge.



Colville / Kettle Falls

80 MILES / 129 KM

This scenic mountain route leads drivers up and over one of the ridges of the Selkirk Mountain range twice, offering stellar views. More than a dozen unique and varied barns are visible along this route.

This Super Side Trip begins at the junction of Highways 20 and 31 at **Tiger**. Turn west onto Highway 20 toward Colville. Take a break along the glittering chain created by the **Little Pend Oreille Lakes** system at the Frater Lake Rest Area. Several Forest Service campgrounds exist near these lakes. Stop and take a short walk to view **Crystal Falls**. Contact the **Colville National Forest** at 509-684-7000 for information on other camping available in the area.

Seven miles east of Colville on Highway 20 is the **Little Pend Oreille National Wildlife Refuge** (open year-round). It's the only mountainous, mixed-conifer forest refuge in the National Wildlife Refuge system. Take the auto tour route through the refuge for a great overview. You'll see older forests consisting of pines and other conifers. More than 200 nesting and foraging migratory bird species, 58 mammal species, and 14 reptile and amphibian species use the refuge's 40,198 acres of forests, streams and wetlands seasonally.

At the junction of Highway 20 and Highway 395 is one of Washington's oldest cities, **Colville**,

known as a leader in historical preservation with a large museum and the "**Keller House**," (May 1-Sept. 30) a well-appointed reminder of the turn of the century. Stevens County was recently awarded a "Preserve America Presidential Award," one of only two counties in Washington to receive this award. Take a walking tour through the **historic downtown** business district. Visual and performing arts abound with a pavilion in the 18-acre Yep Kanum City Park – host to several major events during the spring and summer months. Colville has its own 18-hole public golf course, **Dominion Meadows**. Nearby **Lake Roosevelt**, accessed by a short drive farther west at Kettle Falls, is the area's

COLVILLE / KETTLE FALLS BUSINESS DIRECTORY

ORGANIZATIONS & GOVERNMENT

- Colville Chamber of Commerce (509) 684-5973
- Tri-County Economic Development District (509) 684-4571

PLACES TO STAY

- Beaver Lodge Resort & Campground (509) 684-5657
- Comfort Inn - (509) 684-2010
- Selkirk Motel - (509) 684-2565

THINGS TO SEE & DO

- Kettle Falls Historical Center (509) 738-6964
- Little Pend Oreille National Wildlife Refuge (509) 684-8384
- Stevens County Historical Society (509) 684-5968



Colville Rodeo

largest water sports playground. Heading south on Highway 395 toward Chewelah, visitors travel through a lovely wide valley of mixed cultivated fields and coniferous forests.

**FESTIVALS AND EVENTS
COLVILLE**

- March** Home and Garden Show
Woodland Theater Annual Musical
- May** Stevens County Historical Museum Opens
May - Sept Farmers Markets
Chamber of Commerce Golf Tournament
- June** Colville Rodeo
Tiger Tri and Du Race
- August** Colville Rendezvous Days Music Festival
Northeast Washington Fair
- December** Home for the Holidays
Christmas Tree Extravaganza

Colville Chamber of Commerce
(509) 684-5973 • www.colville.com

COLVILLE
Discover Our Good Nature



ColvilleChamberofCommerce.com

Colville National Forest
65 Lakes and 28 campgrounds

Little Pend Oreille National Wildlife Refuge
40,000+ acres and
4 campgrounds

**Lake Roosevelt National
Recreation Area**
27 campgrounds



**Stevens County
Historical Society**
est. 1903

Tour our museum &
restored historical sites

Find us on Facebook!



Open Daily
May 1st - September 30th

schswa1903@gmail.com
stevenscountyhistoricalsociety.org
700 N. Wynne St., Colville 509-684-5968



Beautiful view along the route



Chewelah

80 MILES / 129 KM

Chewelah has approximately 2,600 residents, and is nestled in a mountain valley providing spectacular views. The town was formed in the early 1870s and was the site of a manganese mine during World War I. Nowadays, it can be seen as a place with vibrant culture, unique shopping, outdoor adventures and is also known as the southern gateway to the Colville National Forest.

Chewelah is home to one of Washington's first **Creative Districts**, featuring downtown artistic murals and artists displaying their work in several businesses around town. The art gallery in town, **Trails End Gallery**, hosts an art walk every

month known as the **First Thursday**. For those that enjoy live theatre, the area also offers a wide variety of performance arts at the **Chewelah Center for the Performing Arts**.

If you seek adventure in the winter months, travel 10 miles to the top of the Flowery Trail pass at 4,046 feet where **49 Degrees North Ski Resort** offers a family-oriented ski hill with miles of groomed trails. The area also has many snowmobiling and cross-country opportunities for people to enjoy.

When snow is not on the ground, visitors can enjoy the only 27-hole golf course in eastern Washington, **Chewelah Golf & Country Club**. There are also plenty of scenic roads, trails for bike tours, mountain biking and hiking as well as several lakes for fishing and recreation. To further expand this playground, the **Chewelah Valley**

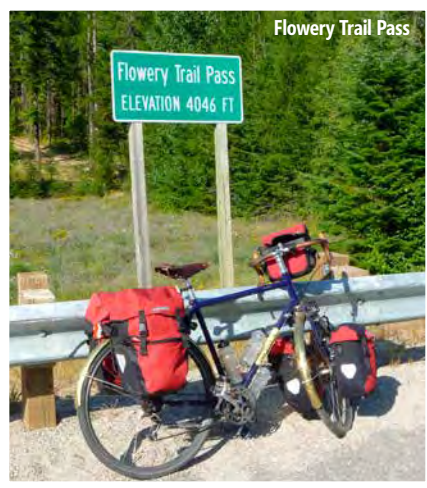


**Chewelah Golf
& Country Club**
chewelahgolf.com
509-935-6807

*27-hole golf course
RV Park
Full-service restaurant*



View from Quartzite Mountain



Flowery Trail Pass

Land Trust recently acquired over 400 acres in the Gold Hill area to serve as a community forest and hiking mecca for residents and visitors.

Chewelah is home to an art gallery, the **Chewelah Casino**, several coffee shops and restaurants, a bike and ski shop, the **Walt Goodman Historical Museum** and an indoor marketplace and vibrant farmers market during the summer months. Stop by the Visitor Center or contact the chamber for more information.

This route rejoins to the main Selkirk Loop route at Usk. Turn south onto Highway 20 toward Newport.

FESTIVALS AND EVENTS CHEWELAH

Jan-Dec	Art Walk, first Thursday of month
February	Chewelah Arts Guild (CAG) Annual Community Arts Show
March	BIG Home and Garden Show
April	Golf Course Opens
May - October	Farmer's Market
June	Rev It Up For The Vets Car Show Taste of Chewelah
August	Melody Riders Horse Show
September	Music on the Mountain Romp "N" Roar Golf Tournament
October	Lions Club Bike Tour 25K & 50K Chewelah Chamber Boofest
November	Winter Craftfest
December	Joy to the World Winter Concert (CAG) Chewelah Chamber City Sidewalks

Chewelah Chamber
(509) 935-8595 • www.chewelah.org

CHEWELAH BUSINESS DIRECTORY

FOOD AND EATERIES

Rusty Putter Bar and Grille (509) 935-6807

ORGANIZATIONS & GOVERNMENT

Chewelah Chamber of Commerce (509) 935-8595

PLACES TO STAY

Chewelah Golf and Country Club RV Park
(509) 935-6807

City of Chewelah Camping at Jenne Memorial Park (509) 935-8311

49 Degrees North RV Parking (509) 935-6649

THINGS TO SEE & DO

49 Degrees North (509) 935-6649

Chewelah Creative District (509) 935-8595

Chewelah Golf and Country Club (509) 935-6807



Salish Pow Wow

Usk • Cusick

The beginnings for these small communities started with two friends. **Cusick** was founded by Joe Cusick in the mid-1880s. **Usk** was established by Cusick's good friend George H. Jones. The two competed for everything – from post offices and steamboat service to baseball bragging rights. Today a lovely riverwalk lies between the two communities, with a park and boat launch in Cusick.

Along Highway 20, river timbers are seen standing as silent reminders of the heyday of logging when the Diamond Match Company, then located in Cusick, created a heavy demand for white pine. The Pend Oreille River provided the transportation for millions of feet of timber, using these pilings to guide, sort and hold logs.

Today, the biggest competition is amongst the region's incredible birdlife population. The pilings and surrounding timber along the river is now home to hundreds of **osprey and eagles**. Huge flocks of **tundra swans** migrate through Cusick and Usk in February and March.

The region's most fascinating points of interest await on the 4,600-acre **Kalispel Tribe's Reservation**, across the Pend Oreille River from Usk. The tribe manages a **large herd of buffalo**, providing an excellent viewpoint for visitors along LeClerc Road. The tribe also operates a **bass fish hatchery** that may be visited by advance reservation. Farther north on LeClerc Road, the **Manressa Grotto system of caves**



CASH IN ON ADVENTURE!

KALISPEL
CASINO

kalispelcasino.com
420 Qlipse River Way, Cusick, WA



Lupines



Tundra Swans migrate through each year

(April-November) is a glacially formed, above-ground cave system used for religious ceremonies by early American Indians and missionaries. There is a winding dirt trail to the cave which affords spectacular views of the Pend Oreille River and surrounding mountains. Just beyond Cusick visit the new **Kalispel Rest Area** with a display of historic and contemporary images and cultural items of the Kalispel Tribe of Indians.

Just north of Cusick on the west side of the road, watch for a small sign to the **Batey-Bould ORV Area**. There is trailhead parking with facilities. Excellent motorcycle and ORV riding in this large area of the Colville National Forest connects to more off-road riding on the Little Pend Oreille ORV trail system to the northwest.

FESTIVALS AND EVENTS USK - CUSICK

March	Tundra Swan Festival
July	Kalispel Casino Car Show
August	Pend Oreille County Fair and Rodeo Kalispel Tribe Pow Wow
September	Pend Oreille Harvest Festival

Greater Newport Area Chamber
www.newportareachamber.com • (877) 818-1008

• BUSINESS DIRECTORY

• FOOD & EATERIES

- **Camas Center** - Usk (509) 447-7122
- **Kalispel Market** - Cusick (509) 447-7144
- **Wetlands** - Cusick (509) 281-7577

• ORGANIZATIONS & GOVERNMENT

- **Kalispel Tribe of Indians** - Usk
(509) 445-1147(509) 445-1147

• THINGS TO SEE & DO

- **Kalispel Casino** - Cusick (509) 447-7144

• PLACES TO STAY

- **Blueslide Resort** (509) 445-1327
- **Kalispel RV Resort / Cottage Rentals** - Cusick
(509) 447-7144



Buffalo herd is managed by Kalispel Tribe



BREATHE IN THE FRESH AIR

AND ALL THE AMENITIES.

With full hookups and cozy cottages, Kalispel RV Resort offers year-round recreation, plus exciting casino action, a restaurant, and more.



Ask about Good Sam and Camas Club member rates.



kalispelrvresort.com

370 Qlispe River Way | Cusick, WA



THE CITY OF NEWPORT

It's a wild ride

Rodeos, concerts in the park, parades, Spray Park, Playhouse, and hot rod car shows are some of the wild and fun things that happen here in Newport. The rest of the year we are just a quiet city with antique stores, historic buildings, camping, hiking, fishing, hunting, boating, snowmobiling and a friendly welcome to all. **Watch for these Special Events:**

- | | |
|--------------------------|-------------------------|
| PRCA Rodeo | Car Shows |
| Rodeo Parade | Art in the Park |
| Farmers Market | Jeep Rodeo |
| Rough Stock Rodeo | Historical Museum Tours |
| Downtown Trick-or-Treat | Relay for Life |
| Christmas Celebration | |
| Newport Autumn Bloom Run | |

City of Newport

200 S. Washington Ave. • Newport, WA 99156

(509) 447-5611

www.newport-wa.org



Newport • Oldtown

Newport, located at the junction of U.S. Highway 2 and Washington State Highway 20, features historic Washington Avenue as its "main street," where some shops display a plaque showing the name of the original business and its date. Many buildings are constructed of locally made bricks. Plan to visit the Newport / Oldtown Chamber of Commerce Visitor Center and the adjacent Pend Oreille County Historical Society Museum to pick up the booklet "**Historic Tour of Newport.**" Both the visitor center and museum are located in **Centennial Plaza**, which was built to celebrate the Washington State Centennial in 1989.

FESTIVALS AND EVENTS NEWPORT / OLDTOWN

May-October	Farmers Market
May	Who Let the Girls Out shopping event
June	PRCA Rodeo and Carnival Fore! The Health of It! Golf Tournament
July	4th of July Celebrations, Diamond Lake Hydroplane Boat Races Rough Stock Rodeo Timber Days Lawn Mower Street Drags, Oldtown
August	Pend Oreille County Fair and Rodeo Regatta Hydroplane Races, Oldtown
September	Bob's Car Show / Vintage Trailer Rally Autumn Bloom Fun Run 5K & 10K Pend Oreille Harvest Festival
November	Hometown Christmas downtown
December	Stratton Craft Show Festival of Trees

Greater Newport Area Chamber
www.newportareachamber.com • (877) 818-1008

Pend Oreille County HISTORICAL MUSEUM

OPEN Memorial Day - Labor Day

Monday - Saturday 10:00-4:00

Sunday 1:00 - 4:00

\$5.00 Adults, children 12 and under free

pochsmuseum.org | 509.447.5388



paid for by Pend Oreille County hotel/motel tax funds



Step back in time and enjoy ice cream at Owens

The museum's exhibits in several outbuildings showcase the area's history. Look for the "Big Wheel," a 16-foot, steam-driven sawmill generator, and the gazebo with picnic area, sum-

mer flower displays and winter holiday lights.

Newport is the county seat of Pend Oreille (*pon-duh-ray*) County, Washington's 39th and youngest county. Formed in 1911, it was origi-

CAMPING ON PUBLIC LANDS - WASHINGTON

SITE	LOCATION	SITES	TENT	SHOWERS	RV FULL/LIMITED
East Sullivan Lake-USFS*	Metaline Falls	38	x	n/a	Limited
West Sullivan Lake-USFS*	lone	7	x	n/a	Limited
Noisy Creek-USFS*	lone	19	x	n/a	Limited
Crescent Lake-USFS	Metaline Falls	6	x	n/a	Limited
Edgewater-USFS*	lone	20	x	n/a	Limited
Mill Pond-USFS (closed 2018)	Metaline Falls	10	x	n/a	Limited
Panhandle-USFS	lone	13	x	n/a	Limited
Pioneer Park-USFS	Newport	18	x	n/a	Limited
South Skookum Lake-USFS	Usk	18	x	n/a	Limited
Browns Lake-USFS	Usk	18	x	n/a	Limited
Lake Leo-USFS	Colville	8	x	n/a	Limited
Lake Thomas-USFS	Colville	16	x	n/a	n/a
Gillette-USFS	Colville	30	x	n/a	Limited
Lake Gillette-USFS	Colville	14	x	n/a	Limited
Little Twin Lakes-USFS	Colville	20	x	n/a	Limited

www.reserveamerica.com • 877-444-6777 •

*Campsites on National Reservation Systems / USACE-U.S. Army Corps of Engineers / USFS-U.S. Forest Service



nally part of Stevens County. The town began as Newport, Idaho, in 1889 when Mike Kelly erected a log building on the banks of the Pend Oreille River. In 1892, a post office was added to Kelly's store, and mail was brought in from Rathdrum, Idaho, via Blanchard. Original transportation depended on the riverboats until the Idaho and Washington Northern Railroad was extended from Newport to Metaline Falls in 1910. The arrival of the Great Northern Railroad in 1892 started Newport's move from the Idaho side to the Washington side of the state line. Today, the businesses and residential areas are divided by the state line. Oldtown, Idaho, is also the start of the Idaho Scenic Byway **Panhandle Historic Rivers Passage** on Highway 2.

After taking in Newport's charming downtown district, take the time to explore the natural splendor of the surrounding Colville National Forest. Check with the **Colville Ranger Station** at 509-447-3129, on Highway 20 just north of Newport, to discover a host of year-round recreational opportunities including the Upper and Lower Wolf Trail hikes. Camping, boat launch and hiking are available at **Pioneer Park** east of Newport along the Pend Oreille River.

BUSINESS DIRECTORY

ARTS, GIFTS & ANTIQUES

Seeber's Pharmacy
(509) 447-2484 • (800) 326-2484

FOOD & EATERIES

Golden Spur Motor Inn
(509) 447-3823
Owen's Grocery, Deli & Soda Fountain (509) 447-3525

PLACES TO STAY

DannyAnn's Bed & Breakfast
(509) 447-3787
Golden Spur Motor Inn
(509) 447-3823
K / M Resorts - Old American Kampground
(509) 447-3663 • (800) 392-5722

GENERAL BUSINESS

Owen's Grocery, Deli & Soda Fountain (509) 447-3525
Seeber's Pharmacy
(509) 447-2484 • (800) 326-2484

ORGANIZATIONS & GOVERNMENT

City of Newport (509) 447-5611
Greater Newport Area Chamber & Information Center (509) 447-5812
Newport - Priest River Rotary Club
(208) 428-8006
Pend Oreille County (509) 447-4119
Pend Oreille County EDC
(509) 447-5569
Pend Oreille County Public Utility District (509) 447-3137
PORTA (509) 447-5286

THINGS TO SEE & DO

USFS Colville Forest Ranger District
(509) 446-7500
Pend Oreille County Historical Society & Museum
(509) 447-5388 • (509) 447-2770

Driving the loop is for the birds!

Hit the road with the Birder's Guide to the International Selkirk Loop -

- Explore 40 key birding sites
- Best places to view
- Best seasons
- Waterproof paper



\$7.95 at retailers or www.SelkirkLoop.org



Scenic View

Priest Lake

Turn north on Highway 57 in the town of Priest River for a scenic drive into the heart of the Selkirk Mountains. **Priest Lake** earns its "Idaho's Crown Jewel" status because of the clarity and purity of its water. The pristine, 19-mile-long lake coupled with the surrounding mountains offer myriad year-round recreational opportunities. In the summer season, the location and sheer size of Priest Lake afford **ample space for all water sports**. Explore the **72-mile shoreline** with its numerous white, sandy beaches by powerboat, sailboat, canoe, kayak or personal watercraft, and include visits to the lake's seven islands. Is **fishing** your forte? Priest Lake is renowned for trophy-sized lake trout, aka mackinaw.

Upper Priest Lake lies north of Priest Lake and offers visitors a unique experience. This 1,300-acre lake and surrounding mountains are a **federally designated Scenic Area**. As such, the area is restricted from development and remains as it has been from time immemorial. Upper Priest Lake is accessible only via hiking and biking trails or a 2.5-mile, no-wake waterway named The Thoroughfare. The Thoroughfare and Upper Priest Lake are ideal **playgrounds for the kayaker and canoeist**.

The **main campgrounds** on the east shore are Lion Head and Indian Creek state parks; phone 208-443-2200 or 208-443-6710 for information and reservations. In the early 1920s,

Nell Shipman (1892-1970) built a movie camp called Lion Head Lodge. This actress produced her own films and maintained a menagerie of wild animals, using Priest Lake's wilderness setting as a natural filming location. Other designated camping areas accessible only by boat are also available. For Forest Service campgrounds in the area, contact the **Priest Lake Ranger District** at 208-443-2512 or Reserve USA at 877-444-6777 for reservations.

In addition to water sports activities, there are miles of **hiking and biking trails surrounding the lake**. Walk among **giant cedars** on the Hanna Flats interpretive trail located at approximately milepost 32 on Highway 57. Only 14 miles north of Nordman is the unique **Roosevelt Grove of Ancient Cedars and Granite Falls** (Memorial-Labor Day Weekend). The trees range from 4 to 12 feet in diameter and reach heights of 150 feet, some as old as 2,000 years. While out for a hike, look for **Priest Lake's** world-famous **huckleberry**, found in August to mid-September. Or foray into the woods to look for fall mushrooms; 450-plus species are present in the area. Duffers may want to try a round of **18 holes at Priest Lake Golf Course**, a challenging and beautiful course that turns into a Nordic center in winter with an ever-expanding **cross-country ski trail system** with more than 70 kilometers.

Visit the **Priest Lake Museum** (Memorial-Labor Day Weekend) on Luby Bay near Nord-



Roasting Marshmallows at Hills Resort

man, situated in a log building built by the CCCs in 1935. Catch a glimpse of the region's early days through revolving interpretive displays.

Destination resorts, RV parks, B&Bs, and numerous campgrounds, including island campsites, provide an abundance of accommodations. Full-service marinas provide boat moorage, rentals and repairs. Grocery stores, gift shops, galleries, several restaurants and other guest services

are conveniently located around the lake.

Priest Lake is also becoming an ever-increasing popular winter season recreation area. The area boasts **400-plus miles of groomed snowmobile trails** amidst more than **500,000 acres of public land for off-trail riding**. Meadows and ridges are suited for family fun, while machine aficionados are challenged by hill climbs.

CAMPING ON PUBLIC LANDS - IDAHO (PRIEST LAKE)

SITE	LOCATION	SITES	TENT	SHOWERS	RV FULL/LIMITED
Indian Creek (Priest Lake State Park)*	Priest Lake	93	x	x	Full/Limited
Dickensheet (Priest Lake State Park)*	Priest Lake	11	x	n/a	n/a
Lionhead (Priest Lake State Park)*	Priest Lake	47	x	n/a	Limited
Outlet Campground-USFS*	Priest Lake	28	x	n/a	n/a
Osprey Campground-USFS*	Priest Lake	18	x	n/a	n/a
Upper & Lower Luby Bay-USFS*	Priest Lake	54	x	n/a	Limited
Reeder Bay-USFS*	Priest Lake	24	x	n/a	n/a
Beaver Creek-USFS*	Priest Lake	41	x	n/a	n/a
Stagger Inn-USFS	Priest Lake	2	x	n/a	n/a
Upper Priest Lake CG's-boat-hike in	Upper Priest Lake	15	x	n/a	n/a
Priest Lake Islands-3 CG's-boat in	Priest Lake	65	x	n/a	n/a

www.reserveamerica.com • 877-444-6777 • ID State Parks 888-922-6743

*Campsites on National Reservation Systems / USACE-U.S. Army Corps of Engineers / USFS-U.S. Forest Service



There are many hiking trails in the area.

**FESTIVALS AND EVENTS
PRIEST LAKE**

- January** Nordic Ski Races, Priest Lake Golf Course
 - Jan - Feb** Snowshoe Softball Tournament
Vintage Snowmobile Races
 - February** U.S. Pacific Coast Championship Sled Dog Races, USFS Airstrip
 - April** Loggers Day at Nordman
 - May** Spring Festival, Memorial Day Weekend
 - July** Fireworks Display, area resorts
Annual Ice Cream Social, Coolin
Huckleberry Festival
 - September** Annual Dry Rot Wooden Boat Breakfast & Parade, Reeder Bay
Priest Lake Yacht Club Gin Fizz, Luby Bay
Annual Boat Poker Run, Cavanaugh Bay
- Priest Lake Chamber**
www.priestlake.org • (888) 774-3785

BUSINESS DIRECTORY

- ARTS, GIFTS & ANTIQUES**
- Entree Gallery - (208) 443-2001
- Indian Creek State Park Store (208) 443-2200

- FOOD & EATERIES**
- Blue Diamond Marina and Resort
(208) 443-2240 • (800) 337-4537
- Hill's Resort (208) 443-2551
- Priest Lake Golf Club (208) 443-2525
- Indian Creek State Park Store (208) 443-2200

- ORGANIZATIONS & GOVERNMENT**
- Priest Lake Chamber of Commerce
(208) 443-3191 • (888) 774-3785
- Priest Lake Trails & Outdoor Recreation
Association (509) 466-3331

- PLACES TO STAY**
- Blue Diamond Marina and Resort
(208) 443-2240 • (800) 337-4537
- Elkins Resort on Priest Lake - (208) 443-2432
- Hill's Resort (208) 443-2551
- Priest Lake Lodge - (208) 443-2538
- Priest Lake State Park (208) 443-2200

- THINGS TO SEE & DO**
- Blue Diamond Marina and Resort
(208) 443-2240 • (800) 337-4537
- Elkins Resort on Priest Lake (208) 443-2432
- Priest Lake Golf Club (208) 443-2525
- Priest Lake State Park (208) 443-2200
- Priest Lake Museum (208) 443-2676
- Priest Lake Trails & Outdoor Recreation
Association (509) 466-3331

BLUE DIAMOND
MARINA AND RESORT

See Priest Lake... by boat!

PONTOON • SKI • WAVERUNNER • FISHING • KAYAK
BOAT RENTALS: 208-443-2240

LAKESIDE LODGING
www.bluediamondmarina.com



Creek fishing near Priest River

Priest River

Located at the confluence of the **Priest Land** and **Pend Oreille** rivers, the town of Priest River is conveniently centered an hour away from Spokane, Wash., and Coeur d'Alene, Idaho. Highway 2 from Oldtown through Priest River and into Sandpoint is the Idaho Scenic Byway **Panhandle Historic Rivers Passage**.

The town's first sawmill was built in 1897. Logs were driven down the Priest River to sawmills from 1901 to 1949. View one of the last of the riverboats, called "bateaux," from the Diamond Match Company at the **Priest River Museum and Timber Education Center** (Memorial-Labor Day Weekend).

Take a walking tour of **historic downtown** and see some of the beautifully renovated buildings, such as the Beardmore Block, a 1922 structure restored to its former glory.

Priest River is a recreational paradise with top-notch boating, hunting, fishing, skiing, golfing, snowmobiling, camping, cross-country skiing and hiking all nearby. Stop in at the **Albeni Falls Dam Visitor Center** (Memorial-Labor Day Weekend), just west of Priest River on Highway 2, to take a tour. The U.S. Army Corps of Engineers maintains three campgrounds in the area: Albeni Cove, Priest River Mudhole and the newly redone Riley Creek. For the **rock climbing enthusiast**, Riverside Rocks, six miles east of Priest River, has six technical climbs on the river side of the road. More information can be found in the "Climber's Guide to North Idaho" by Thaddeus Laird.

A 9-hole golf course and driving range at **The Ranch Club** west of Priest River also includes the Restaurant and Pizza House. The gorgeous Priest River offers 42 miles of floatable water ranging from slow-moving sightseeing to fast-moving Class III rapids. Pend Oreille River

CAMPING ON PUBLIC LANDS - IDAHO (PRIEST RIVER)

SITE	LOCATION	SITES	TENT	SHOWERS	RV FULL/LIMITED
Riley Creek-USACE*	Laclede	67	x	x	Limited
Priest River-USACE*	Priest River	20	x	x	Limited
Albeni Cove-USACE*	Priest River	14	x	x	Limited

www.reserveamerica.com • 877-444-6777

*Campsites on National Reservation Systems / USACE-U.S. Army Corps of Engineers / USFS-U.S. Forest Service



Deer hiding in the grass.

holds largemouth bass as well as brook, brown, rainbow and cutthroat trout; walleye; whitefish; and various panfish.

PRIEST RIVER Chamber of Commerce

Priest River

Your Small Town Recreational Paradise

www.PriestRiverChamber.com

IDAHO
visitidaho.org

**FESTIVALS AND EVENTS
PRIEST RIVER**

- May** Priest River Pickers Community Yard & Sidewalk Sale
- July** Fireworks over the Pend Oreille River
Timber Days Celebration
- September** Rowing Regatta
Panhandle Blues Festival
- December** Christmas on Main Street

Priest River Chamber
www.priestriverchamber.com • (208) 448-2721

BUSINESS DIRECTORY

FOOD & EATERIES

Ranch Club Golf Course & Restaurant (208) 448-1731

ORGANIZATIONS & GOVERNMENT

- City of Priest River (208) 448-2123
- Newport - Priest River Rotary Club (208) 428-8006
- Priest River Chamber of Commerce (208) 448-2721
- Priest River Development Corporation (208) 448-1312

PLACES TO STAY

Eagle's Nest Motel (208) 448-2000

THINGS TO SEE & DO

Ranch Club Golf Course & Restaurant (208) 448-1731



Hiking Trail at Farragut State Park.



Blanchard · Spirit Lake · Athol · Bayview · Sagle
 60 MILES / 98 KM

The South Lakes route takes visitors within close proximity to the area’s pristine large and small lakes. Starting this side trip from **Newport / Oldtown**, follow Highway 41 south. Just west of the small community of **Blanchard**, **StoneRidge Resort** is located within **Stone-Ridge Recreational Community**, which boasts a par 71, 19-hole golf course, restaurant, swimming pools and many activities for families.

The community of **Spirit Lake** and the serene 4.5-mile long Spirit Lake offers easy access at three public boat ramps. This community also offers several scenic trails for hiking and

mountain biking. Pick up an **Empire Trails** map which includes directions and skill level. A few miles south of Spirit Lake, turn east on Highway 54, traveling 11 miles (18 km) to the junction of Highways 54 and 95. The small village of **Athol** is a good place to pick up quick supplies before heading east to **Farragut State Park** situated on the southern shores of Lake Pend Oreille. Camping cabins, full hookups and tenting sites, boat launch, hiking and biking trails are available here. It’s **Idaho’s second largest state park** at 4,000 acres, and also includes a museum to learn about this park’s fascinating military history.

A few minutes south of the Athol junction is **Silverwood, the Northwest’s largest theme park** (May 1 to September 30, weekends in October), with more than 65 rides, shows and attractions, including four roller coasters, a steam locomotive and a water park. RV/tent camping is available on-site.

Visit nearby **Bayview** with its towering

CAMPING ON PUBLIC LANDS - IDAHO (GREATER SANDPOINT)					
SITE	LOCATION	SITES	TENT	SHOWERS	RV FULL/LIMITED
Farragut State Park*	Bayview	300+	x	x	Limited
Round Lake State Park*	Sagle	53	x	x	Limited
Springy Point-USACE*	Sagle	38	x	x	Limited
Whiskey Rock Bay-USFS-boat in	Lake Pend Oreille	9	x	n/a	n/a
Green Bay-USFS	Lake Pend Oreille	1	x	n/a	Limited

www.reserveamerica.com • 877-444-6777 • ID State Parks 888-922-6743
 *Campsites on National Reservation Systems / USACE-U.S. Army Corps of Engineers / USFS-U.S. Forest Service



Mountain Biking on Empire Trails

mountains and steep, rocky cliffs that have become a haven for **mountain goats**, eagles and other alpine wildlife. Bayview is a favorite location for all types of boat moorage. The bay is also home to several float-house communities, which lends a feeling of an ocean-side resort to the area. The southern end of Lake Pend Oreille is more than 1,000 feet deep and provides an excellent, quiet, ocean like location for the U.S. Navy to perform experiments and research to aid in submarine and sonar designs.

Returning to Highway 95, head north 14 miles to **Cocolalla Lake**, on the west of the highway, with easy year-round access to fishing and camping. A few miles farther is **Round Lake State Park** with camping, fishing, hiking, as well as canoe and paddleboat rentals.

Continue north to **Sagle**, and turn right at Sagle Road for 11.8 miles (18.9 km) to visit the **Bird Aviation Museum and Invention Center** (May 1 - Sept 30) at Glengary Bay. View an impressive collection of aviation and World War II memorabilia collected by world-famous Dr. Forrest Bird, inventor of the respirator and pediatric ventilator.

Return to Highway 95 and head north to Lakeshore Drive. Turn west to explore the **WaterLife Discovery Center** (May 1-Sept. 30) with 3.5 acres of developed interpretive exhibits and 6.5 acres of forested wetlands. The self guided educational center combines a fish hatchery, nature trails, overlook bridges, wildlife watching areas, interpretive signs, and underwater viewing opportunities along a stream and a pond.

FESTIVALS AND EVENTS BAYVIEW

May	Memorial Day Very Berry Pancake Feast
July	Old Fashioned July 4th Celebration
September	Labor Day All You Can Eat Pancake Feast

Bayview Chamber of Commerce
www.bayviewidaho.org

FESTIVALS AND EVENTS SPIRIT LAKE

January	Winterfest
May	Opening of Empire Trails (Biking/Hiking)
June	The Big Back-In Lawn Mower Drags
July	Independence Day Parade, vendors, live music and fireworks
September	Labor Day on the Grass Festival - music, car and motorcycle show, mountain bike ride, live music, vendors and a parade

Spirit Lake Chamber of Commerce
www.spiritlakechamber.com • (208) 623-3411

BUSINESS DIRECTORY

ORGANIZATIONS & GOVERNMENT

- Bayview Chamber of Commerce
(208) 683-1980
- Spirit Lake Chamber of Commerce
(208) 623-3411

PLACES TO STAY

- Farragut State Park - (208) 683-2425
- MacDonald's Hudson Bay Resort - (208) 683-2211
- Silverwood Theme Park - (208) 683-3400
- StoneRidge Resort - (208) 437-2451

THINGS TO SEE & DO

- Farragut State Park - (208) 683-2425
- MacDonald's Hudson Bay Resort - (208) 683-2211
- Silverwood Theme Park - (208) 683-3400
- StoneRidge Resort - (208) 437-2451



Chairlift at Schweitzer

Sandpoint

Sandpoint's experienced a lot of buzz in recent years. Rand McNally and *USA Today* declared it the **"Most Beautiful Small Town."** *Sunset* magazine voted Sandpoint the **"West's Best Small Town."** *Outside* magazine named it one of the nation's **"Top 10 Great Outdoor Towns."** The *New York Times* called Sandpoint **"a sporting paradise."** *USA Today* described Sandpoint as a **"Norman Rockwell-meets-Ansel Adams classic, brought to life every summer."**

Just an hour north of Coeur d'Alene, Sandpoint is about 90 minutes away from the closest international airport, found at Spokane, Wash. Driving from the south into Sandpoint on Highway 95 sets the stage for a dramatic entrance. Travelers cross the two-mile Long Bridge to reach Sandpoint, sitting on the northwestern

shore of Lake Pend Oreille (pronounced *pon-duh-ray*), the **second-largest freshwater lake** west of the Mississippi. For decades, Lake Pend Oreille held the world record for a rainbow trout caught in 1947. Many fishing charters operate on the lake. The average size trout is around 12 pounds, but local derby winners boast catches topping 20 pounds. The lake is 43 miles long, up to 6 miles wide and has depths of more than 1,000 feet, offering myriad fun activities.

Windsurf, kayak or simply swim in the beautiful clear water. **City Beach** at the end of Bridge Street, in the heart of downtown, has beautiful sandy beaches and a lovely park with barbecue pits, tennis and volleyball courts, and a public boat launch. Get out on the water and

THE LODGE AT SANDPOINT
Your Place on the Lake for all Seasons

41 Lakeshore Drive
(south end of the Long Bridge)
208 263-2211
www.LodgeatSandpoint.com

Stay with us in Sandpoint
the rest is easy

Located in downtown Sandpoint. Indoor hot tub, outdoor (seasonal) pool, 100% smoke free, ultrafast wi-fi, free bright side breakfast, children under 18 stay free.

CEDAR STREET

208.263.9581 • www.cedarstreethotel.com
415 Cedar St., Sandpoint, ID



Pend Oreille Bay Trail

learn about the area's history and geology on a daily tour with **Lake Pend Oreille Cruises**, (early May to mid-October) departing from City Beach.

High atop the Selkirk Mountains above Sandpoint is year-round mountain adventure with world-class accommodations. **Schweitzer Mountain Resort** is the Inland Northwest's largest ski resort with 2,900 acres of terrain. Nordic and snowshoe trails, snowmobile and backcountry tours offer endless adventure. Ride the lift in the summer to get to the top for spectacular views all the way to Canada and Montana, then hike or mountain bike on the many trails back down to the village.

With the population at about 8,000, Sandpoint impresses visitors not only with the scenery but also the friendliness of the townsfolk and a casual pace of life. Sandpoint is the Selkirk Loop's largest U.S. town and is

Nelson, B.C.'s sister city. There are designated **bicycling paths** both south and west of town offering more than 12 paved miles of peaceful pedaling for the whole family. The **Bonner County History Museum** (open year-round) is a wonderful place to learn about the area's first settlers and native peoples. Next to the museum is the **Native Plant Arboretum** at Lakeview Park that includes a wild medicinal herb collection. Three national forests are easily accessible from Sandpoint: Idaho Panhandle, Colville and Kootenai national forests. Stop in at the **Sandpoint Ranger Station** west of town on Highway 2 or call 208-263-5111 for maps to hundreds of miles of outstanding hiking, backcountry camping and mountain bike trails.

Truly an arts town, Sandpoint has close to two dozen galleries located in town and the surrounding area. Each summer the **Festival at Sandpoint** features the Spokane Symphony

CAMPING ON PUBLIC LANDS - IDAHO (GREATER SANDPOINT)

SITE	LOCATION	SITES	TENT	SHOWERS	RV FULL/LIMITED
Sam Owen-USFS*	Hope	81	x	n/a	Limited
Springy Point-USACE*	Sagle	38	x	x	Limited

www.reserveamerica.com • 877-444-6777

*Campsites on National Reservation Systems / USACE-U.S. Army Corps of Engineers / USFS-U.S. Forest Service



Orchestra along with other international talents. The town's shopping and fine dining are major attractions any time of year. Experience theater from a bygone era at the restored Spanish-mission-style **Panida Theater**, built in 1927. Do a wine tasting while downtown at the **Pend d'Oreille Winery**, Idaho's Winery of the Year in 2003. World-class shopping wouldn't be complete without visiting the unique shops in downtown. A beautiful log structure on Sand Creek downtown houses the **Cedar Street Bridge Public Market** filled with all sorts of unexpected treasures.

It wasn't until the Northern Pacific and the Great Northern railroads arrived, that the town grew and became home to the Humbird Lumber Company, in 1900. At that time, Sandpoint

became the Northwest's leading supplier of cedar telephone poles. Today, Sandpoint is one of the **West's greatest railroading towns**, known as the spot where the Burlington Northern Santa Fe, Montana Rail Link and Spokane International rail systems all converge to create "The Funnel," an amazingly active rail crossroads with more than 40 trains a day traveling through. Rail buffs come from around the world to see them.

Follow Highway 200 northeast of Sandpoint to the **Pend Oreille National Scenic Byway** and the start of the loop's **Lake Pend Oreille-Kootenai River Super Side Trip** (see page 33 for more details).

On the Web & in Print, Get to Know SANDPOINT!

SandpointOnline.com

... there's a lot goin' on!

Our town's remarkable community website

SANDPOINT

MAGAZINE

FREE at 200+ locations around town



Produced by
www.Keokee.com



FESTIVALS AND EVENTS SANDPOINT

January	Banff Mountain Film Festival Northern Lights, Schweitzer
February	Winter Carnival, multiple locations in Sandpoint and Schweitzer
March	The Follies Stomp Games, Schweitzer
April	Season Finale, Schweitzer
May	Lost in the '50s Weekend
May - Oct	Farmers Market (Saturday and Wednesday)
June	CHAFE 150 Benefit Bike Ride Summer Sampler
June-Sept	ArtWalk
July	4th of July Celebration and Parade Inland Empire Antique & Classic Boat Show Northwest Winefest, Schweitzer Beer Fest
August	Festival at Sandpoint Long Bridge Swim Arts & Crafts Fair Artists' Studio Tour
September	Schweitzer Fall Fest Scenic Half Marathon
October	Harvest Fest
November	Holidays in Sandpoint kickoff
December	Festival of Trees

Greater Sandpoint Chamber

www.sandpointchamber.org • (800) 800-2106

BUSINESS DIRECTORY

ARTS, GIFTS & ANTIQUES

- Pend Oreille Arts Council (208) 263-6139
- Pend d'Oreille Winery
(208) 265-8545 • (877) 452-9011

FOOD & EATERIES

- Bottle Bay Resort & Marina (208) 263-5916
- Cedar Street Hotel & Suites (208) 263-9581
- Dover Bay Waterfront Resort - Dover (208) 263-5493
- America's Best Value Hotel
(208) 263-2111 • (866) 519-7683
- Eichardt's Pub, Grill & Coffee House (208) 263-4005
- Evans Brothers Coffee Roasters (208) 265-5553
- Jalapeno's Mexican Restaurant (208) 263-2995
- Pend d'Oreille Winery
(208) 265-8545 • (877) 452-9011

- Samuels Store & The Blue Heron Cafe
(208) 263-1146
- Schweitzer
(208) 263-9555 • (800) 831-8810
- Trinity at City Beach (208) 255-7558

GENERAL BUSINESS

- Alpine Shop (208) 263-5157
- Greasy Fingers Bikes N Repair (208) 255-4496
- Keokee :: Marketing Communications
(208) 263-3573 • (800) 880-3573
- Outdoor Experience (208) 263-6028
- Sandpoint Online & Sandpoint Magazine
(208) 263-3573 • (800) 880-3573

ORGANIZATIONS & GOVERNMENT

- City of Dover (208) 265-8339
- City of Ponderay (208) 265-5468
- Greater Sandpoint Chamber of Commerce
(208) 263-2161 • (800) 800-2106
- Pend Oreille Arts Council (208) 263-6139

PLACES TO STAY

- Best Western Edgewater Resort (208) 263-3194 •
(800) 635-2534
- Bottle Bay Resort & Marina (208) 263-5916
- Cedar Street Hotel & Suites (208) 263-9581
- Dover Bay Resort - Dover (208) 263-5493
- America's Best Value Hotel
(208) 263-2111 • (866) 519-7683
- FairBridge Inn & Suites - Ponderay
(208) 263-2210 • (800) 214-8378
- Best Western Plus Ponderay Mountain Lodge
Ponderay (208) 255-4500
- K2 Inn, The (208) 265-5896
- Lodge at Sandpoint, The - Sagle (208) 263-2211
- Pend Oreille Luxury Vacation Rentals
(208) 217-0141
- Schweitzer
(208) 263-9555 • (800) 831-8810
- Sleep's Cabins - Sagle
(208) 255-2122 • (866) 302-2122
- Twin Cedars Camping, Vacation & Tipi Rentals
Sandpoint (208) 920-1910
- Western Pleasure Guest Ranch (208) 263-9066

REAL ESTATE

- Tomlinson Sotheby's International Realty
(208) 263-5101

THINGS TO SEE & DO

- Bottle Bay Resort & Marina (208) 263-5916
- Festival at Sandpoint
(208) 265-4554 • (888) 265-4554
- Idaho Club, The
(208) 265-2345
- Lake Pend Oreille Cruises
(208) 255-5253 • (888) 726-3764
- Panida Theater
(208) 263-9191 • (208) 255-7801
- Pend d'Oreille Winery
(208) 265-8545 • (877) 452-9011
- Schweitzer
(208) 263-9555 • (800) 831-8810
- Western Pleasure Guest Ranch (208) 263-9066
- Sandpoint Farmers Market (208) 265-6111
- Selkirk Powder Guides (208) 263-6959



SANDPOINT
IDAHO



GET *Social* WITH
NATURE



Greater
SANDPOINT
CHAMBER of COMMERCE

VISITOR INFORMATION
WWW.VISITSANDPOINT.COM 208.263.2161

Dine. Play. Shop. Stay.



- Fine Food and Lodging
- Unique Shopping
- An Award-Winning Winery
- Craft Breweries
- Practically Perfect Pubs

Don't miss downtown Sandpoint!

www.DowntownSandpoint.com

LOVELY. GORGEOUS. MAGNIFICENT.

The **natural beauty** of the Selkirk Loop earns those accolades – and more – from visitors. And for your travels around the Loop, there's no better place to take it all in than Sandpoint. Find **terrific lodging choices**, more than **40 fine restaurants**, a busy **entertainment calendar** plus **fun activities** from hiking, biking, boating and skiing ... to just plain hanging in that hammock. See you here!



FOR ADDITIONAL INFORMATION
ON IDAHO CALL 1-800-VISIT-ID



schweitzer.com



Mountain goats are frequently seen when hiking on Scotchman Peak.

Scotchman Peaks Proposed Wilderness

From Sandpoint along the Lake Pend Oreille-Kootenai River Super Side Trip, serious seekers of solitude can easily access the 88,000-acre **Scotchman Peaks** roadless area that spans the Idaho-Montana border. Since the 1970s, when the U.S. Forest Service carried out extensive evaluations of lands suitable for wilderness, this rugged, scenic and biologically diverse portion of the **Cabinet Mountains** has been managed for its wilderness potential. Scotchman Peak, at 7,009 feet, is the highest peak in Bonner County and one of the best-loved hikes in the Cabinet Mountains, a range that runs for 150 miles and spreads across two states, Idaho and Montana.

The views from Scotchman Peak are magnificent: the expanse of Lake Pend Oreille to the southwest, the rugged proposed wilderness to the north, and the Cabinet Mountain Wilderness Area to the east. Some say that the views are better than Washington's Abercrombie Mountain, Hall Mountain and Copper Butte, or Idaho's Mount Roothaan (near Chimney Rock). The views are truly hard to beat, plus there's a strong likelihood of seeing **mountain goats**, making for a special wildlife-viewing treat.

Scotchman Peak also serves as a great jumping off point for excursions into some fabulous backcountry. To learn more about the proposed wilderness and see a schedule of

guided hikes, look up **Friends of Scotchman Peaks Wilderness** at www.ScotchmanPeaks.org. The group is working to preserve the Scotchmans and recently published a detailed, informative map. For a complete guidebook to hikes in the Cabinet Mountains, pick up a copy of **"Trails of the Wild Cabinets"** sold at the Sandpoint Visitor Center.

This roadless area is part of the **Cabinet-Yaak ecosystem**, a home for a few grizzly bears as well as wolves, which reestablished themselves naturally from Canada (they were not reintroduced). Present also are rare birds and animals such as the fisher, pine marten, wolverine and boreal owl.

**Venture
INN**

1015 W. 9th St. LIBBY, MT
406-293-7711
ventureinnlibby.com



Hope • Clark Fork • Moyie Springs • Troy • Libby

112 MILES / 180 KM

Just north of Sandpoint, Idaho, take Highway 200 east to Hope. This is also the start of the **Pend Oreille National Scenic Byway**.

This photographic stretch allows for stunning vistas along the north shore of Lake Pend Oreille. Watch for wayside geologic and historic sites with wide pullouts. Look for the historical marker at the Hope Peninsula turnoff and take a moment to view the site of Idaho's first structure made by white men, Kullyspell House, a trading post established by David Thompson in 1809. Sam Owen Campground is one mile past Hope on the Hope Peninsula and Game Preserve. This popular campground has a day use area (fee required), swimming beach and boat launch. Contact Reserve USA at 1-877-444-6777 for reservations.

Just east of **Clark Fork**, across the Montana State Line, stop at scenic overlooks at Cabinet Gorge Dam and Noxon Rapids Dam. Complete with local interpretive information, beaches and lawn, these are pleasant stops from which to view the Clark Fork River.

Turn north onto Highway 56, aka Bull Lake Road. One point of great interest is the ancient grove of the **Ross Creek Cedars** (mid-May to Sept. 30) with an interpretive trail through numerous stands of 500-year-old trees. There is a nice Forest Service campground on Bull Lake nearby. Contact the Kootenai National Forest at 406-293-6211 for reservations.

At the junction of Highways 56 and 2, take an optional turn east, and go 3 miles to the **Kootenai Falls Overlook** (mid-April to mid-October) and suspension bridge, a nice place for a picnic and short hike to the falls. Driving 15 miles farther brings you to **Libby**, a hub for outdoor adventure. Take a free tour of Libby Dam and camp at Lake Koocanusa.

Turning west at the Highway 56/Highway 2 junction takes you through the community of **Troy**. Stop at the Troy Ranger Station for information on recreational opportunities in the area. A lovely Forest Service Campground exists at the Yaak River junction. Watch for another scenic overlook at the **Moyie River Canyon** (pronounced moy-YAY), eight miles east of Bonners Ferry just before crossing the Moyie River Bridge.

FESTIVALS AND EVENTS LIBBY / TROY

May	Stokr Bike Ride
May - October	Libby's Farmers Market (Thursday)
June - Sept	Troy's Farmers Market (Friday)
June	Logger Days (Libby)
July	Old Fashioned 4th of July Celebration (Troy)
August	River Front Blues Festival (Libby) Ignite the Nites Car Show (Libby)
September	Chainsaw Carving Competition (Libby)

Libby Chamber of Commerce
www.libbychamber.org • (406) 293-4167

BUSINESS DIRECTORY

FOOD & EATERIES

Venture Inn - Libby (406) 293-7711

PLACES TO STAY

Clark Fork Lodge - Clark Fork (208) 266-1716

Country Inn - Libby (406) 293-2092

Pend Oreille Shores Resort - Hope
(208) 264-5828

Venture Inn - Libby (406) 293-7711

THINGS TO SEE & DO

Kootenai Country Montana - Libby
(406) 293-7711

Turner Mountain Ski Area (406)293-2468

U.S. Army Corps of Engineers - Libby,
Libby Dam Tours (406) 293-5577

WELCOME TO LIBBY DAM

**US Army Corps
of Engineers**

*** Gift Store located
in Visitor Center**

*** Call 406-293-5577
for Visitor Center hours, tour
availability and other
recreation information**

*** Located at 260 Souse Gulch Rd,
17 miles North of Libby, MT**



Downtown Shops

Bonnors Ferry

Located just 30 miles south of the **U.S.-Canada border**, Bonners Ferry is the county seat of **Boundary County** – a sparsely populated county of less than 10,000 residents – where unlimited **outdoor recreation** is coupled with a down-home, **friendly atmosphere**. **Mirror Lake Golf Course**, a municipal 9-hole par 3 course on the south end of town, offers views all the way to Canada at every hole.

When heading north on Highway 95 from Sandpoint toward Bonners Ferry, travelers follow the Idaho Scenic Byway named **Wild Horse Trail** that connects to the international border on Idaho State Highway 1 at Porthill.

The route takes you past **McArthur Lake**, where the Selkirk and Cabinet mountains are at their closest point, establishing a natural migratory wildlife corridor between the ranges. **McArthur Lake Wildlife Management Area**

was established in 1942 to protect and enhance Idaho’s waterfowl habitat. Operated by the Idaho Department of Fish and Game, the habitat encompasses more than 1,200 acres and includes a dock, sportsman’s access, boat launch and restroom.

The modern-day history of Bonners Ferry began in 1864, when merchant Edwin L. Bonner, from Walla Walla, Washington, established a ferry to serve thousands of prospectors and miners crossing the Kootenai River en route to the newly discovered goldfields on Wild Horse Creek in the East Kootenays of British Columbia, Canada.

In the 1880s the community thrived as a major supplier for the mines to the north in the Ainsworth-Kaslo area of British Columbia. Beginning in 1883, steamboats on the Kootenai River created a romantic history, carrying passengers and freight between Bonners Ferry and British

208.267.6467 Mon-Sat 8 - 5
7178 Main Street Bistro hours 11-3
Bonners Ferry ID Like us on Facebook!

Chic-N-Chop Restaurant
Serving breakfast all day, lunch, dinner and more!
208-267-2431
6421 South Main Bonners Ferry, ID



FESTIVALS AND EVENTS BONNERS FERRY

- May** Memorial Day Veterans Parade & Ceremony
- May-October** Saturday Farmers Market
- June** Borders 3 Jamboree Car Show
Kootenai River Run
Rotary Club Fishing Derby
- July** 4th of July Celebrations
Kootenai River Days
- August** Boundary County Fair
- September** Demolition Derby
Kootenai River Ride
- November** Turkey Trot Fun Run
Holiday Craft Fair and Farmers Market
- December** Community Choir Concert

Bonnors Ferry Visitor Center
www.boundaryedc.com/recreation • (208) 267-5922

Columbia for 25 years. One of these steamers, the *SS Moyie*, was fully restored and is open to the public in Kaslo, British Columbia. (See page 58, “North Kootenay Lake – Silvery Slocan” Super Side Trip to learn more.)

The charming, **historic downtown** is filled with two-story brick buildings that were built to withstand annual spring flooding, replacing earlier wooden structures – many built on stilts. The **Boundary County Museum** holds hundreds of historic photos showing flooded streets, many showing buildings that are still recognizable. The adjacent **International Gateway Visitor Center** offers more area information and hiking maps for over 50 maintained trails on over 500,000 acres of public lands. You are sure to find a trail to suit your needs. The visitor center also houses restrooms that are open 24 hours a day.

Early settlers discovered that the repeated flooding of the **Kootenai River** produced rich soil in the valley. The U.S. Army Corps of

Engineers created dikes to allow commercial farming of grain and hay in the early part of the 20th century. Remnants of commercial orchards, decimated by a series of severe winters in the 1920s, may still be spotted throughout the area.

Overlooking Bonners Ferry is Black Mountain at 6,100 feet and Clifty Mountain at 6,700 feet. A wonderful panoramic view of the area can be seen by driving to the Black Mountain Lookout from Twenty-Mile Road. High-clearance, four-wheel-drive vehicles are recommended.

For an alpine lake experience, visit **Roman Nose Lake** west of Bonners Ferry, the only lake in the Selkirks that is wheelchair accessible. The

CAMPING ON PUBLIC LANDS - IDAHO (BONNERS FERRY)

SITE	LOCATION	SITES	TENT	SHOWERS	RV FULL/LIMITED
Smith Lake-USFS	Smith Lake	7	x	n/a	Limited
Robinson Lake-USFS	Robinson Lake	10	x	n/a	Limited
Meadow Creek-USFS	Meadow Creek Road	22	x	n/a	Limited
Copper Creek-USFS	Eastport	16	x	n/a	Limited

www.reserveamerica.com • 877-444-6777

*Campsites on National Reservation Systems / USACE-U.S. Army Corps of Engineers / USFS-U.S. Forest Service



Above: Moose and her twins in one of the ponds at the Kootenai National Wildlife Refuge.
Left: Owllets at the Kootenai National Wildlife Refuge.

Visit Bonners Ferry

- 500,000 acres of public lands
- 6,000 acres of lakes and rivers
- 350 miles of trails
- 294 miles of streams
- 30 miles from Canada
- 9 hole golf course



Pick up a trail map at our Visitor Center.



www.bonnerrferry.id.gov • (208) 267-5922



Bonnerr's Ferry Ranger District (208-267-5561) on Highway 95 just south of town provides maps to this lake, plus guides to local hiking trails and camping in the Selkirk Mountains.

Bonnerr's Ferry is home to the **Kootenai Tribe of Idaho**, one of six bands of the Kootenai Nation. Historically a semi-nomadic people roaming the entire Selkirk Loop region, the Kootenai Tribe has retained its native language and other cultural elements more strongly than most other American Indian groups in the United States. In the 1990s, the tribe successfully established the only casino on the Selkirk Loop route at the Best Western Kootenai River Inn. The tribe operates an **impressive state-of-the-art hatchery that rears white sturgeon and burbot**, both endangered species in the Kootenai River.

The **Kootenai National Wildlife Refuge**, (open year-round) located 5 miles west of town, was established in 1965 to reclaim some of the Idaho Panhandle wetlands. The 2,774-acre refuge was purchased with funds generated from the Federal Duck Stamp Program. Its primary purpose is to provide resting and feeding habitat for migrating waterfowl using the Pacific Flyway. Open year-round, a 4.5-mile loop tour road for automobiles and bicycles guides visitors to wildlife observation points. Foot trails provide access to wildlife habitats. In the valley to the north, the **Nature Conservancy's Ball Creek Ranch Preserve** and the **Boundary/Smith Wildlife Management Corridor** provide 4,000 additional critical habitat acres for migrating waterfowl and large mammal species.

BUSINESS DIRECTORY

ARTS, GIFTS & ANTIQUES

- Bonnerr's Books** (208) 267-2622
- Under the Sun** (208) 267-6467

FOOD & EATERIES

- Badger Den** (208) 267-1486
- Chic-N-Chop Restaurant** (208) 267-2431
- Kootenai River Brewing Company** (208) 267-4677
- Kootenai River Inn & Casino**
(208) 267-8511 • (800) 346-5668
- Mugsy's Tavern & Grill** (208) 267-8059
- Under the Sun** (208) 267-6467

GENERAL BUSINESS

- Columbia Bank** (208) 267-7027
- Dyck's Oil & Auto** (208) 267-2400
- Les Schwab Tire Center** (208) 267-2411
- Mountain West Bank** (208) 267-3102
- Under the Sun** (208) 267-6467

ORGANIZATIONS & GOVERNMENT

- Bonnerr's Ferry Rotary Club** (208) 267-1812
- City of Bonnerr's Ferry** (208) 267-3105
- Greater Bonnerr's Ferry Chamber of Commerce** -
(866) 418-3980
- Friends of the Kootenai National Wildlife Refuge**
(208) 267-3888

PLACES TO STAY

- Blue Lake RV Resort** - Naples (208) 946-3361
- Dodge Peak Lodge** - (208) 267-7268
- North Haven Campground** - (208) 603-9212
- Kootenai River Inn & Casino**
(208) 267-8511 • (800) 346-5668
- Log Inn Bonnerr's Ferry** (208) 267-3986
- Northside School Bed & Breakfast** (208) 267-1826

REAL ESTATE

- Century 21 - Four Seasons Realty** (208) 267-2100
- Pace-Kerby & Company** (208) 267-3123

THINGS TO SEE & DO

- Boundary Creek Wildlife Management Area**
(208) 769-1414
- Boundary County Historical Society** (208) 267-7720
- Kootenai National Wildlife Refuge** (208) 267-3888
- Kootenai River Inn & Casino**
(208) 267-8511 • (800) 346-5668
- Mirror Lake Golf Course** (208) 267-5314

2010-2018 Voted Best Burger

Mugsy's Tavern and Grill

- Full Bar / voted Best Burger and Service
- 15 Taps from the NW & domestic ones too
- Large selection of Wines from WA and ID
- Outdoor Seating on Shaded Patio

7161 Main St. Bonnerr's Ferry 208.267.8059
www.mugsystavern.com

Chamber & Tourism Info

Balfour Chamber
(877) 229-5448
www.balfourcanada.ca

Bayview Chamber
www.bayviewidaho.org
Bonners Ferry Chamber
(208) 267-5922
www.visitbonnersferry.org

Castlegar Chamber
(250) 365-6313
www.castlegar.com

Chewelah Chamber
(509) 935-8595
www.chewelah.org

Coeur d'Alene Visitor Bureau
(208) 555-1234
www.coeurdalene.org

Colville Chamber
(509) 684-5973
www.colvillechambercommerce.com

Creston Valley Tourism Society
(250) 428-4342
www.explorecrestonvalley.com

Greater Newport Area Chamber
(877) 818-1008
www.newportareachamber.com

Idaho Tourism
(800) VISIT-ID
www.visitid.org

Kaslo Chamber
(866) 276-3212
www.kaslochamber.com

Kootenay Lake Chamber
www.kootenaylake.bc.ca

Kootenay Rockies Tourism
(800) 661-6603
www.hellobc.kr

The International



Selkirk Loop
Look for this sign at supporting communities and member locations.

TO MEADOW CREEK
DUNCAN DAM

TO NAKUSP
REVELSTOCK

TO GRANBROOK /
KIMBERLEY

TO MARYSVILLE

TO SANDPOINT

TO SPOKANE

TO TETON

TO WASHINGTON

TO YAKIMA

TO ZEPHYRUS

TRAVEL TIMES AND DISTANCES

- Calgary - Nelson 625 km; 386 miles; 7.5 to 8 hours
- Vancouver - Nelson 657 km; 407 miles; 7.5 to 8 hours
- Cranbrook - Nelson 231 km; 143 miles; 3 to 3.5 hours
- Revelstoke - Nelson 246 km; 152 miles; 3 to 3.5 hours
- (depending on Ferry from Revelstoke to Galena Bay)
- Kalona to Nelson 338 km; 209 miles; 4 to 4.5 hours
- Spokane - Sandpoint 75 miles; 1.5 hours
- Seattle - Sandpoint 480 miles; 8 hours
- Portland - Sandpoint 460 miles; 8 hours

Super Side Trips

- North Kootenay Lake and the Selkirk Loop
- Rivers, Dams and Mines
- Lake Pend Oreille - Mealline Falls - Sandpoint 98 miles; 2 hours
- Sandpoint - Nelson 139 miles; 3.5 hours (via Bonners Ferry - includes 45 min. ferry ride.)
- Flowers Trail - Little Pend Oreille
- South Lakes

- Town over 2,500 w/ services
- Town under 2,500 w/ services
- Town under 1,500

Mileage Conversion: 1 kilometer = 0.62 mile

0 Miles 5 Miles 10 Miles
0 km 10 km 16 km





AMERICA'S BYWAYS™

International Selkirk Loop
National Scenic Byway
 Route shown in red (ID, WA, BC)
 (Includes Scenic Byways listed above)

©2023 The International Selkirk Loop
 Printed in USA
 Design: Keokee, Sandpoint, Idaho

ICONS

- GOLF COURSE (250) 368-3144
- INFO/CHAMBER OF COMMERCE (250) 368-3144
- BORDER CROSSING (250) 358-2316
- SKIING (250) 357-9433
- DAMS
- AIRPORT/AIRSTRIP

- Nelson Kootenay Lake Tourism (877) 663-5706 www.nelsonkootenaylake.com
- Nelson Visitor Info Center (877) 663-5706 www.discovernelson.com
- North Pend Oreille Chamber (800) 795-0671 www.npo.chamber.org
- Priest Lake Chamber (888) 774-3785 www.priestlake.org
- Priest River Chamber (208) 448-2721 www.priestriverchamber.com
- Sandpoint Chamber (800) 908-2106 www.visitbandpoint.com
- Slocan District Chamber (208) 523-3411 www.slocanlake.com
- Spirit Lake Chamber (208) 623-3411 www.spiritlake-idaho.com
- SpoKane Convention & Visitors Bureau (888) SPOKANE www.visitspokane.com
- Tiger Info Center (509) 442-INFO www.povm.com/byway/
- Tourism Rossland www.tourismrossland.com
- Trail Visitor Centre (250) 368-3144 www.trail.ca
- Village of New Denver (250) 358-2316
- Village of Salmo (250) 357-9433
- Washington State Tourism (425) 270-1962 www.ExperienceWA.com



Apple Orchard



Erickson • Kitchener • Yahk

50 MILES / 80 KM

Heading north from Bonners Ferry, remain on Highway 95 and head toward the Eastport/Kingsgate International Border Crossing. Stop at the new **scenic overlook** one mile north of the State Highway 1 junction. At the top of the grade, this area has opportunities for mountain goat viewing and traverses through wetlands where moose are often spotted.

Seven miles south of the international border is a small U.S. Forest Service campground at **Robinson Lake** (Memorial-Labor Day Weekend) with 10 sites available. Directly north of Highway 95, this small, 60-acre lake is a good trout and bass fishery with a dock for easy access.

Picnic at an unusual and unexpected interpretive site by turning south onto Meadow Creek Road No. 229 at Good Grief, marked by a store with a cafe. Travel 3 miles to **Moyie Crossing** (open year-round), where a beautiful overlook of the river is decorated with fish-and-rock sculptures. Travel an additional 5 miles south to **Meadow Creek Campground** (Memorial-Labor Day Weekend), a U.S. Forest Service facility with 22 campsites.

Another campground is found two miles south of the international border off Highway 95 at **Copper Creek** (Memorial-Labor Day Weekend). Follow Road No. 2517 to this U.S. Forest Service facility with 16 campsites. Be sure to take the hike to **Copper Creek Falls**, a short, easy forested walk to a serene, lovely waterfall.

As you cross the **international border**, (open 24 hours) at Eastport/Kingsgate, Highway

CAMPING ON PUBLIC LANDS - EAST KOOTENAY AREA, B.C.

SITE	LOCATION	SITES	TENT	SHOWERS	RV FULL/LIMITED
Lockhart Beach-PP	Boswell	12	x	n/a	Limited
Yahk-PP	Yahk	26	x	n/a	Limited
Garland Bay-FRS	Riondel	12	x	n/a	Limited
Goat River Canyon-FRS	Kitchener	5	x	n/a	n/a
America Creek-FRS	Yahk	5	x	n/a	Limited

*Reserve at www.discovercamping.ca 800-689-9025 / PP-Provincial Park / FRS-Forestry Recreation Sites



Yahk Soap & Candle Co.

95/3 follows along the **Moyie River**. The Moyie River from Moyie Lake in British Columbia to Kingsgate is an open **paddle route** ideal for a quiet river journey through prime wildlife country.

Watch for your turn west to Creston just before the charming town of **Yahk**. Consider taking the time to visit the Yahk area to enjoy the beautiful **Yahk Soap and Candle Company**, and their goats that you can sometimes find on the roof. Get a snack at **Two Scoop Steve** and take a stroll along the river at the Yahk Provincial Park.

As you approach the **Erickson** area east of Creston, savor the scenic beauty of the farm and orchard fields as this leisurely route winds its way west. Between Erickson and Creston, this route

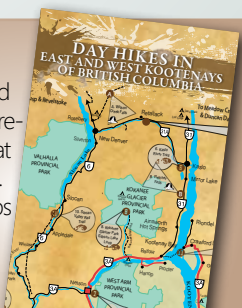


Buttin

passes 17 **fruit and vegetable stands** (June-September). Try some freshly picked cherries, peaches, apples, pears and more.

Day Hikes

Get off the road and into the hills to appreciate the beauty that surrounds the loop. Look for 3 trail maps [Wash., Idaho, and B.C.] produced by the Selkirk Loop.



FREE at area Chamber and Visitor Centers

BUSINESS DIRECTORY

ARTS, GIFTS & ANTIQUES

Yahk Soap & Candle Company
(250) 424-5166

FOOD & EATERIES

J & B Smagh Orchards & Fruit Stands
(250) 428-1490
Two Scoop Steve (250) 424-5166

PLACES TO STAY

Mountain Park Resort
(250) 428-2954 • (877) 428-2954
Yahk Provincial Park (250) 422-3003



Baillie-Grohman Estate Winery

Creston

Discover the warm climate that provides the Creston Valley with a wealth of fresh fruits and vegetables - everything from asparagus to zucchini. Cherries are the primary fruit grown (exporting more than 3 million pounds annually), with apples being secondary as well as strawberries, raspberries, blueberries, apricots, peaches, pears and plums. There are numerous fruit and vegetable stands along Highway 3 east of Creston where you can purchase some locally grown produce.

Creston celebrates its agricultural heritage starting with the **Creston Valley Blossom Festival** on the Victoria Day Long Weekend in May that includes two parades, a classic car show, street vendors, live entertainment and events for all ages. While attending the annual Blossom Festival, take in the **Yaqaan Nuki Pow Wow** to make this Festival weekend a true family event.

Three km (1.5 miles) north of the border on Highway 21, the route travels through the Ktunaxa (pronounced *k-too-nah-ha*) Nation. This is the native name of the Lower Kootenay Band, which means "to travel by water." Visit the **Yaqaan**

Nuki Heritage Centre for native crafts and history (April-October).

With three exceptional wineries in the region, the Creston Valley has been dubbed Canada's next wine region. Stop by for a tasting of these award-winning wines, and enjoy the view of this beautiful valley. Don't forget to visit the **Creston Valley Farmers Market** for everything grown, made or baked in the Kootenays. There are many U-pick orchards, an organic cheese making company, artisan breads can be found at bakeries, and many of these locally grown items are served in area restaurants.

If you are in the area in July or August stop by the Visitor Info Centre to get times and a ticket for the popular Bus Wine Art Tour that visits local artisans and serves local wine along the route.

Nine km (6 miles) north of the border crossing on Highway 21, watch for the turnoff to the **Creston Golf Club**, an 18-hole championship course, for one of the most scenic golfing experiences. The mild climate in the Creston Valley means a golf season starting in mid-March with



Creston Valley Fruit Stand

great weather lasting until the end of October. There are 17 golf courses within two hours of Creston!

Across the valley, west of Creston off Highway 3, is the **Creston Valley Wildlife Management Area and the Discovery Centre (CVWMA)**. This internationally designated Ramsar site is a 17,000-acre wetland, home to one of Canada's densest populations of ospreys and more than 300 bird species. Boardwalks and dike trails are open year-round. Take a self-guided tour along wheelchair-accessible boardwalks. Two viewing towers provide excellent panoramas of the area. Naturalists are onsite at the Discovery Centre from May to October offering guided canoe tours, special programs and events as well as information on trails, wildlife sightings and much more. Wildlife viewing, fishing and boating on Duck Lake and surrounding wetlands are world class.

CRESTON MUSEUM AND ARCHIVES

One of the best small museums anywhere! Model railway, events, gift shop, picnic area.
219 Devon Street, Creston
(250) 428-9262, crestonmuseum.ca



GUIDED CANOE TOURS
VIEWING TOWERS
HIKING TRAILS
BIKING TRAILS
EDUCATIONAL DISPLAYS

1760 WEST CRESTON RD (11 KMS WEST OF CRESTON, BC OFF HWY 3)
OPEN SEASONALLY FROM MAY TO OCTOBER
P: (250) 402-8661 E: [EDUCATION@DISCOVERY-CENTRE.CA](mailto:education@discovery-centre.ca)
WWW.DISCOVERY-CENTRE.CA



Blue Heron



Bird watching tower at the CVWMA

Watch for the signs to **Downtown Creston** off of Highway 21, turning east. On the way you will see the "Glacier Brewery of the Kootenays," home of Kokanee beer. **Columbia Brewery** offers tours on weekdays (mid-May to mid-October). The tour ends in the Kokanee Beer Gear Store where you'll sample the product and have a chance to shop.

In Creston's **downtown district** you will see some buildings in the Edwardian style, but the **Art Deco style** of the 1930s is most prevalent. While there are no skyscrapers, there are two landmark grain elevators. The elevators are the last in British Columbia and the last in a Canadian downtown center. Continue exploring this arts community visiting galleries and studios to appreciate many of the talented artists in the area.

For more in-depth history of the area, visit the **Creston Museum and Archives**, regarded as one of the finest small museums in British Columbia. Authentic historic buildings and unique artifacts can be found from Creston's past.

The closest regional airport is found in Cranbrook, a 75-minute drive to the east.

For some local flavor, the Orchards Galore Super Side Trip is just east of Creston on Highway 3 (page 42).

Explore the West Kootenay
Adventure is here. 



GO DO Pick up your Go & Do Regional Guide found everywhere in the West Kootenay!

#GOKOOTENAYS.com



School House at the Creston Museum



READY FOR YOU
TO REDISCOVER



#EXPLORECRESTONVALLEY  
PLAN YOUR TRIP AT EXPLORECRESTONVALLEY.COM

The Fun Starts Here...



Continental Breakfast • Ample
secure parking • Outdoor access
rooms • Ricky's dining with hearty
homestyle meals • Lounge




RAMADA

1809 Hwy 3A
Creston, BC V0B1G8
250-254-1111

Creston Ramada



Creston Valley

TOUR THE GLACIER BREWERY OF THE KOOTENAYS.



Tour times:

Mid-May to Mid-October — Mon. to Fri. 9:30 am, 11 am, 1 pm, 2:30 pm
Tours run on Weekends & Statutory Holidays in July & August
Please visit our website for summer schedule

Closed-toe shoes must be worn

Columbia Brewery Beer Gear Store:

Open Mon. to Fri.: 9 am - 4:30 pm April to Dec.
Open Weekends July & Aug. **Open Fridays Year Round!**



1220 Erickson Street, Creston, BC
(250) 428-9344 • www.kokaneebeergear.com

BUSINESS DIRECTORY

ARTS, GIFTS & ANTIQUES

- Cresteramics Store** (250) 428-5538
Gold-N-Treasurers (250) 428-4020
Legend Logos (250) 428-2977

FOOD & EATERIES

- Creston Golf Club** (250) 428-5515
Creston Hotel / Jimmy's Pub & Grill
 (250) 428-2225
Creston Ramada
 (250) 254-1111 • (855) 254-1124
Dairy Queen Brazier (250) 428-9800
J & B Smagh Orchards & Fruit Stands
 (250) 428-1490

GENERAL BUSINESS

- Creston Valley Advance** - (250) 428-2266
Home Building Centre
 (250) 428-9388

ORGANIZATIONS & GOVERNMENT

- Creston Valley Visitor Centre**
 (250) 428-4342 • (866) 528-4342
Creston Valley Economic Development
 (250) 428-4342
Creston Valley Tourism Society
 (250) 402-3030
Kootenay Employment Services Society
 (250) 428-5655
Kootenay-Columbia Discovery Centre Society
 (250) 402-6905
Town of Creston (250) 428-2214

PLACES TO STAY

- Bavarian Orchard Motel**
 (250) 428-9935 • (800) 663-9544
Creston Hotel / Jimmy's Pub & Grill
 (250) 428-2225
Creston Ramada
 (250) 254-1111 • (855) 254-1124
Creston Valley Motel
 (250) 428-9823 • (866) 428-9823
Uptowner Hotel
 (250) 428-2238
Mountain Park Resort
 (250) 428-2954 • (877) 428-2954
Scottie's RV Park & Campground
 (250) 428-4256 • (800) 982-4256
Valley View Motel
 (250) 428-2336 • (800) 758-9334

THINGS TO SEE & DO

- Columbia Brewery Tours**
 (250) 428-9344
Creston & District Museum and Archives
 (250) 428-9262
Creston Golf Club (250) 428-5515
Creston Valley Wildlife Management Area
 (250) 402-6900
Kootenay-Columbia Discovery Centre Society
 (250) 402-6905

FESTIVALS AND EVENTS CRESTON

Jan-Dec	Creston Valley Farmers Market
February	Women's Valentine's Curling Bonspiel
March	Men's Butterfly Curling Bonspiel
May	Creston Valley Bird Festival Creston Valley Blossom Festival
June	Just Tri-It Triathlon
July	Canada Day Creston Kootenay Lake Gran Fondo
August	Columbia Basin Culture Tour
September	Creston Valley Fall Fair Blue Heron Half Marathon
November	7th Siding Festival of Film Christmas Art and Craft Fair
December	Creston Valley Winterfest

Creston Valley Tourism Society
www.explorecrestonvalley.com
 (250) 428-4342

Kick it into gear - cycle the loop!

Explore via bike with A Cyclist's Guide to the International Selkirk Loop -

- Convenient ride segments
- Main route plus side trips
- Elevations and distances



\$19.95 at retailers or www.SelkirkLoop.org



Glass House

Wynndel • Boswell • Gray Creek • Crawford Bay • Riondel

North of Creston on Highway 3A is scenic **Kootenay Lake**, the largest natural lake in the Kootenay Rockies region and the third largest in British Columbia. Steep, forested slopes flank the 90-mile-long lake that many refer to as the “jewel of the Kootenay region.” Originally and still inhabited by the **K’tunaxa**, European settlers arrived in the late 1800s. As late as the 1950s, sternwheelers were the main link for many of the people that surround this huge body of water. These communities have become havens for artists, craftspeople, writers and musicians. The whole area is packed with cultural and heritage attractions, golf courses, and exciting wilderness parks and is connected to the west shore by the **free ferry** at Kootenay Bay.

Motorcyclists are exhilarated by the more than 300 curves as the road follows the lakeshore north of Creston. Take a break at Boswell and tour the unique **Glass House** (May 1-Thanksgiving), constructed of more than 500,000 discarded embalming fluid bottles. The square shape of the bottles makes possible a curiously beautiful home.

Kootenay Lake provides **year-round boating and fishing** opportunities since the lake does not freeze in winter. In fact, some of the best fishing happens during the winter months. The lake is renowned for the large Gerrard rainbow trout and the Dolly Varden.

Several **public boat launches and rest areas** are found along the way, with the first at Kuskanook, 24 km (15 miles) from Creston. Ten kilometers north is **Lockhart Creek Provincial Park** (Victoria Day-Labour Day Weekend) which has a broad sandy beach and a small separate camping area. The park covers approximately 3,751 hectares and contains old-growth cedar and hemlock forests along extensive hiking trails. Additional launches can be found at Boswell, Gray Creek, Kootenay Bay, Riondel and Garland Bay.

Gray Creek is the western terminus of the 85-km Gray Creek Pass forestry back road to Kimberley, which is 15 km to the pass. This scenic back road (four-wheel-drive recommended) accessible from either Anderson Road or Oliver Road, offers opportunities for alpine hiking, wildlife viewing, huckleberry picking and nature photography. Normally open mid-July to October, the road’s current condition may be checked by stopping at **Gray Creek Store**. The store, established in 1913 and still in the same family, holds wonderful memories of bygone general



East shore Biking Trail

stores and you can still find almost anything including a great collection of books on early British Columbia history.

At **Crawford Bay**, enjoy a round at **Kokanee Springs Resort**, a world-class 18-hole championship golf course situated among the historic fruit trees from former pioneer farms and designed by Norman Woods. Crawford Bay is a haven for working **artisan studios** and galleries featuring traditional crafts such as iron working, broom making, weaving and pottery. The unique food venues often feature live music. Local East Shore Trails and Bikes Association's (ESTBA) well maintained **network of trails** has a detailed map available at the Kootenay Lake Chamber of Com-

merce visitor information booth. The ferry landing is just 10 minutes from the artisan workshops.

Inspiring views of **Kokanee Glacier** can be seen from the highway summit. The Kootenay Lake ferry is the **longest free ferry** in the world. It is part of the Highway 3A route between Calgary, Alberta (7 hours east), and Vancouver, British Columbia (10 hours west). In the summer there are two ferries running about 50 minutes apart.

Before getting to the ferry, three more areas are worth discovering. Not far north of the ferry

Highway 3A East Shore
Kootenay Lake



info@kootenaylake.bc.ca
kootenaylake.bc.ca

Driving the loop is for the birds!

Hit the road with the Birder's Guide to the International Selkirk Loop -

- Explore 40 key birding sites
- Best places to view
- Best seasons
- Waterproof paper





Many artisans shops in the area.

landing, visitors are welcome to explore **Yasodhara Ashram**, a year-round yoga retreat and study centre. It features many unique buildings, an extensive garden and a new Temple of Light. Further north is the quaint, historic mining community of **Riondel**. To the south at the ferry landing is the **Pilot Bay Provincial Park**, a walker's paradise. From here, access the historic **Pilot Peninsula Lighthouse**, a short hike with a great view. The lighthouse was built in 1905, when it was the lake and not the highway that connected Kootenay communities. The park also includes **Pilot Bay Marine Park**, the most protected waters on Kootenay Lake. There are campsites and a nice picnic spot accessible by boat

or foot. Follow along the shoreline of Pilot Peninsula and connect with the ESTBA walking trails.

Plan to spend at least a couple of days to explore this awesome area and enjoy the many activities available.

CEDAR POINT RV RESORT & MARINA

Full service resort with cottages, RV sites, camping, protected marina, and more.
13165 Highway 3A, Boswell
(250) 223-8271, www.cedar-pointrv.com

FESTIVALS AND EVENTS EAST SHORE COMMUNITIES

June-Sept	Art Tour, along East Shore from Wynddel to Riondel
June	Stawberry Social at Yasodhara Ashram
July	Starbely Jam Music Festival, Crawford Bay Gray Creek Hall Museum Days, Gray Creek
July-August	Sunday Market Riondel Daze, Riondel
September	Gray Creek Regatta, Gray Creek Kootenay Lake Fall Fair, Crawford Bay

Kootenay Lake Chamber of Commerce
www.kootenaylake.bc.ca



**“The Selkirk Loop
needs to be on
every traveler’s
bucket list.”**

—RV America Magazine

Kokanee Springs Resort



Kootenay Lake Ferry

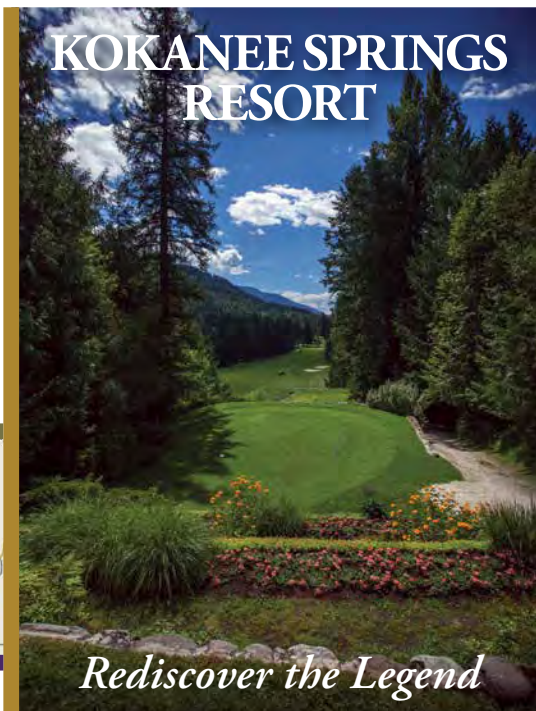


- Legendary Golf • Stunning Views • Course-Side Lodge
- Luxury Villas & Cottages • Casual Dining • Pro Shop
- Golf Lessons

1-800-979-7999



kokaneesprings.com



KOKANEE SPRINGS RESORT

Rediscover the Legend

BUSINESS DIRECTORY

ARTS, GIFTS & ANTIQUES

- Artisans of Crawford Bay** (250) 227-9466
Barefoot Handweaving Crawford Bay
 (250) 227-9655
Kootenay Forge Ltd. Crawford Bay (250) 227-9466
Dog Patch Pottery Crawford Bay
 (250) 250-354-3159
North Woven Broom - Crawford Bay (250) 227-9245
Yasodhara Ashram, Yoga Retreat – Study Center -
 Kootenay Bay (250) 227-9224 • (800) 661-8711

FOOD & EATERIES

- Black Salt Cafe** (250) 227-9596
Boccalino - Kootenay Bay (250) 227-6906
Destiny Bay Resort - Boswell
 (250) 223-8234 • (800) 818-6633
Gray Creek Store - Gray Creek (250) 227-9315
Kokanee Springs Golf Resort -
 Crawford Bay (250) 227-9226 • (800) 979-7999
Lodges of Kokanee Springs, The -
 Crawford Bay (250) 227-9226 • (800) 979-7999

GENERAL BUSINESS

- Gray Creek Store** - Gray Creek (250) 227-9315

ORGANIZATIONS & GOVERNMENT

- Artisans of Crawford Bay** (250) 227-9466
**Kootenay Lake Chamber of
 Commerce** - Crawford Bay (250) 227-9655
Village of Riondel (250) 225-3262

PLACES TO STAY

- Cedar Point RV Resort & Marina** - Boswell
 (250) 223-8271
Boccalino - Kootenay Bay (250) 227-6906
Crawford Bay RV Park - (250) 227-9010
Destiny Bay Resort - Boswell
 (250) 223-8234 • (800) 818-6633
Kokanee Chalets, Cabins, RV Park & Campground
 - Crawford Bay (250) 227-9292 • (800) 448-9292
Kokanee Springs Golf Resort -
 Crawford Bay (250) 227-9226 • (800) 979-7999
Kootenay Lake Lodge - Waterfront Chalets & RV
 (250) 223-8181
Lodges of Kokanee Springs, The -
 Crawford Bay (250) 227-9226 • (800) 979-7999
Riondel Park & Campground (250) 225-3338
Shadow Mountain - Riondel (250) 225-3551
Wedgewood Manor & Glamping Retreat
 (250) 227-9233

THINGS TO SEE & DO

- Artisans of Crawford Bay** (250) 227-9466
Glass House, The - Boswell (250) 223-8372
Kokanee Springs Golf Resort -
 Crawford Bay (250) 227-9226 • (800) 979-7999
Lockhart Beach Provincial Park - Boswell
 (250) 422-3003
North Woven Broom - Crawford Bay (250) 227-9245
Pilot Bay Provincial Park - Crawford Bay

WELLNESS

- Yasodhara Ashram, Yoga Retreat – Study Center** -
 Kootenay Bay (250) 227-9224 • (800) 661-8711

KOOTENAY LAKE FREE FERRY SCHEDULE

All times are Pacific time zone

Balfour Departures	Kootenay Bay Departures
6:30 am	7:10 am
8:10 am	9:00 am
9:50 am	10:40 am
*10:40 am	*11:30 am
11:30 am	12:20 pm
*12:20 pm	*1:10 pm
1:10 pm	2:00 pm
*2:00 pm	*2:50 pm
2:50 pm	3:40 pm
*3:40 pm	*4:30 pm
4:30 pm	5:20 pm
*5:20 pm	*6:10 pm
6:10 pm	7:00 pm
7:50 pm	8:40 pm
9:40 pm	10:20 pm

*Additional summer sailings in **BLUE**,
 Summer schedule in effect from third week in
 June to Labor day. See current schedule at
www.selkirkloop.org

Times in black sail all year round.

ROUTE: Across Kootenay Lake, 32 km east of Nelson on
 Highway 3A, between Balfour and Kootenay Bay.

CROSSING TIME: 45 minutes.

EXPECT DELAYS peak periods, weekends & holidays

FOR THE LATEST SCHEDULE: 1-250-229-4215

Times are subject to change without notice.

Ferry CAN accommodate large RV's.

NO food services on blue time slots.



Kokanee Mountain Zipline

Balfour • Harrop • Procter

A gateway to the wild and wondrous West Kootenay region, **the bustling lakeside port of Balfour** is located just inside the mouth of Kootenay Lake's West Arm that stretches west to Nelson. Set amidst mountainous walls of pine and fir with snowy peaks, Balfour is home for the *MV Osprey* and its historic sister ship, the *MV Balfour* (see ferry schedule, on page 59).

Five minutes southwest of Balfour on Highway 3A is **Kokanee Creek Provincial Park**, a popular, family-oriented park with full facilities: a spacious campground with a sand spit and a boat launch, picnic area and an adventure playground. See spawning channels where kokanee spawn in August and view interpretive signage describing this landlocked salmon. Eight walking trails, which take 1.5 total hours to hike, line the park. For a breathtaking day hike or backpacking trip, look for one of the access roads to **Kokanee Glacier Provincial Park**, designated as one of the top 10 scenic destinations in the Northern Rockies. Just west of the campground, this 32,035-hectare park holds 85-plus km of hiking trails.

You will also find **Kokanee Mountain Zipline** sandwiched between these picturesque provincial parks. Their family-friendly tours offer

spectacular views of the surrounding mountain ranges, Kootenay Lake and Kokanee Creek Provincial Park below. With nearly a mile of total ziplines, you'll have ample opportunity to admire the scenery.

From Balfour, turn north onto Highway 31 passing the 18-hole championship **Balfour Golf Course** and enter the Selkirk Loop's **North Kootenay Lake – Silvery Slokan Super Side Trip** (page 52) or turn southwest to Nelson (page 58).

On the way to Nelson, **don't miss a visit to Harrop and Procter**, accessed by a five-minute ride on a cable-ferry that crosses the West Arm of Kootenay Lake to a place locals call "The Little Village That Could."

Innovative and proactive, Procter manages its own forest and watershed and grows its own botanicals and herbs. **Heritage Theatre** performs here all summer long, and the town features great food and surprising craft, antique, gardening and shopping opportunities.

Stretch your legs by taking a hike on the **Harrop Creek Trail**, a 20-km moderate hike to Harrop Mill Lake, where there's fishing. The trail provides one of several accesses to the wilderness area of **West Arm Provincial Park** and Mount Lasca, at 2,379 meters (7,805 feet).



Kokanee spawning at Kokanee Creek Provincial Park

BUSINESS DIRECTORY

FOOD & EATERIES

- Balfour Golf Course
(250) 229-5655 • (866) 669-4653
- Dock n' Duck Pub, Grill & Take Out
(250) 229-4244
- Kootenay Lakeview Spa Resort & Event Centre
(250) 229-4141
- OSPREY 2000 Snack Bar (on ferry) (250) 354-8623

PLACES TO STAY

- Dock n' Duck Pub, Grill & Take Out
(250) 229-4244
- Kootenay Lakeview Spa Resort & Event Centre
(250) 229-4141

GENERAL BUSINESS

- Blue Sky Clothing Company
(250) 229-4434

ORGANIZATIONS & GOVERNMENT

- Balfour & District Business and Historic Association (250) 229-5448 • (877) 229-5448

THINGS TO SEE & DO

- Balfour Golf Course
(250) 229-5655 • (866) 669-4653
- Kokanee Mountain Zipline
(866) 358-8688

KOOTENAY LAKEVIEW

SPA RESORT & EVENT CENTRE

ASK FOR THE
SELKIRK LOOP RATE!

COME ESCAPE FOR AN EXPERIENCE

UNLIKE ANY OTHER

- Complimentary lakeview lounge deluxe breakfast bar
- Complimentary Eagleview executive 9 hole golf course
- New on-site outdoor whirlpool spa
- Private balcony overlooking the sparkling Kootenay Lake

BOOK YOUR STAY

1.877.229.4141

1285 QUEENS BAY RD. BALFOUR BC

WWW.KOOTENAYLAKEVIEWRESORT.COM



Sunrise at Ainsworth Hot Springs



Ainsworth Hot Springs • Kaslo • New Denver • Silverton • Slocan

110 MILES / 177 KM

Heading north from Balfour on Highway 31, this route circumnavigates Kootenay Provincial Park. Take the time to stop at the **unique caves of Ainsworth Hot Springs** (open year-round) where you also get a bird's-eye view of Kootenay Lake while soaking in the outdoor pool. Driving just 6 km (3.5 miles) farther brings visitors to the unusual **Cody Caves** (visit www.CodyCaves.ca for opening status) where guided, seasonal, one-hour underground tours are appropriate for anyone age 6 and up.

Kaslo is a charming, restored heritage village that features great restaurants and art galleries. One of the 60 designated heritage buildings is the **Langham Cultural Centre**, originally constructed as a hotel in 1896. Inside, take a self-guided tour of **Langham's Japanese Canadian Museum** to learn more about what happened to Canada's Japanese population during World War II. The community is home to the majestic **S.S. Moyie** (mid-May to mid-October)

the world's oldest intact passenger sternwheeler and a **National Historic Site of Canada**. The ship is also the location of the Kaslo Area Visitor Information Centre. For easy hiking and biking, take the River Walk along Kaslo River. Wardner Trail leads to a viewpoint overlooking the village and Kootenay Lake. In winter, Kaslo is a gateway to alpine skiing, cat-skiing, cross-country skiing, skating, snowmobiling and ice fishing.

Traveling west 28 km (18 miles) on Highway 31A from Kaslo, the roadway summits at 1,100 m (3,600 feet) at Fish Lake, site of a picnic area. Watch for the well-marked signs to the **mining ghost town of Sandon**. Visit the **Sandon Museum** (Victoria Day-Labour Day Weekend) or tour the adjacent, still-functioning powerhouse and explore the buildings that remain.

Idaho Lookout (Victoria Day-Labour Day Weekend) can be accessed via a steep, gravel road that begins at the far end of town. With a vehicle having sufficient ground clearance, it's



S.S. Moyie

Ainsworth
hot springs resort

All you have to do is get here.

A magical retreat awaits you in the heart of the Kootenay mountain region. With contemporary rooms designed to give you stunning views of the lake and mountains while experiencing this historic site in an unforgettable way.



Fresh, Local, Indigenous Inspired.

The family friendly Ktunaxa Grill offers an exceptional dining experience. Roof top patio now open seasonally.



**KTUNAXA
GRILL**



For body, mind, & soul.
1 800 668 1171

3609 Highway 31, Ainsworth Hot Springs, BC
ainsworthhotsprings.com



Red bridge on the Kaslo River Trail

possible to drive up to a parking lot at 7,000 feet. A short hike takes travelers to the former fire lookout above Slocan Lake and quite possibly **the best 360-degree viewpoint on the entire Selkirk Loop route**. It is said that on a clear day you can see all the way to Idaho.

For bikers and hikers, two trails are found at the junction of Highway 31A and Sandon. The 13 km (8 mile) **Galena Trail** is an easy 2 percent grade on an abandoned rail line that takes you to the shores of Slocan Lake at **Rosebery Provincial Park**, a good place to camp or picnic. A manually operated cable car carries bikes and riders across Carpenter Creek at the start of the ride. The 13 km (8 mile) **K & S**

Railgrade Trail on the east side of the parking lot leads to Sandon.

Turn south onto Highway 6 to find the villages of **New Denver and Silverton**. These small communities are only 5 km (3 miles) apart on the eastern shore of beautiful Slocan Lake. In downtown New Denver there are colorful shops, cafes and Friday Market as well as the **Silvery Slocan Museum**. Take a stroll along the Mori Lakeside Trail at the end of Main Street or sit and reflect at the Japanese-style Kohan Reflection

WOODBURY RESORT AND MARINA

Open Daily

JB's Restaurant - "BEST FISH & CHIPS ON THE PLANET"
(250) 353-7717

Motel • RV Park • Tenting
Boat Rentals • Moorage

3 miles North of Ainsworth Hot Springs.
1-877-353-7717 www.woodburyresort.com

• **AINSWORTH HOT SPRINGS**

• **FOOD & EATERIES**

- Ainsworth Hot Springs Resort
(250) 229-4212 • (800) 668-1171
- Woodbury Resort & Marina / JB's Restaurant & Pub
(250) 353-7717 • (877) 353-7717

• **PLACES TO STAY**

- Ainsworth Hot Springs Resort
(250) 229-4212 • (800) 668-1171
- Ainsworth Motel (250) 229-4711 • (888) 848-4463
- Lakeside Cabins & Campground (250) 229-4506
- Woodbury Resort & Marina / JB's Restaurant & Pub
(250) 353-7717 • (877) 353-7717

• **THINGS TO SEE & DO**

- Ainsworth Hot Springs Resort
(250) 229-4212 • (800) 668-1171



Sandon Museum

FESTIVALS AND EVENTS KASLO

February	Winter in the Forest Festival
April	Woodbury Dolley Derby
May	May Days Garden Festival Kaslo Logger Sports
June-August	Kaslo Artwalk
June-Sept	Saturday Market
August	Kaslo Jazz Festival Pirate's Day on S.S. Moyie Sternwheeler Columbia Basin Culture Tour
September	British Car Show
December	Kaslo Light Up Celebration Kaslo Christmas Fair

Kaslo Chamber
www.kaslochamber.com • (866) 276-3212

• KASLO / MEADOW CREEK

• FOOD & EATERIES

- **Eric's Meat Market & Deli** (250) 353-2436
- **Kaslo Hotel & Brew Pub** (250) 353-7714
- **Treehouse Restaurant, The** (250) 353-2955

• GENERAL BUSINESS

- **Doug Pyper Photographics** (250) 353-9611

• ORGANIZATIONS & GOVERNMENT

- **Kaslo & Area Chamber of Commerce** (866) 276-3212
- **Kootenay Lake Historical Society / SS Moyie National Historic Site** (250) 353-2525
- **Langham Cultural Socie Centre** (250) 353-2661
- **Village of Kaslo** (250) 353-2311

• PLACES TO STAY

- **Kaslo Hotel & Brew Pub** (250) 353-7714
- **Kaslo Municipal Campground**
(250) 353-2311 • (250) 353-2662
- **Kootenay Lake Provincial Park** (250) 551-0100
- **Wing Creek Resort** (250) 353-2475

• THINGS TO SEE & DO

- **Kaslo Jazz Etc. Summer Music Festival**
(250) 353-7577 Ticket Hotline (250) 353-7548
- **Kootenay Lake Historical Society / SS Moyie National Historic Site** (250) 353-2525
- **Langham Cultural Centre** (250) 353-2661
- **North Kootenay Lake Arts & Heritage Council – Saturday Market** (250) 366-4323



www.kaslohotel.com

"It's a great part of the world, better than Europe."

—R. Allen Brown, Hayden, Idaho



Idaho Peak

Garden located next to the hospital. The **Nikkei Internment Memorial Centre** (Victoria Day-Labour Day Weekend) offers an hour-long tour dedicated to the memory of Japanese Canadians interned during World War II. In **Silverton**, British Columbia's smallest municipality, take a stroll downtown and visit the Silverton Gallery with year-round exhibits, including the **Silverton Outdoor Mining Museum & Interpretive Centre** (Victoria Day-Labour Day Weekend), which holds 58 pieces of old mining equipment and a blacksmith shop. The village has a nice municipal campground and day park at the lake's edge. Across the lake is **Valhalla Provincial Park**, a place for serious backcountry adventurers. Access is by water taxi, hiking trail at lake level or via rough gravel roads into the interior of the park at the **Village of Slocan**.

South from Silverton, access **Kokanee Glacier Provincial Park** (open year-round) on Enterprise Road, where there is parking at the trailhead. A day hike or overnight backpack is well worth the time to get you into one of British Columbia's high country parks.

Stop at the **Village of Slocan** on the south end of Slocan Lake, where Valhalla Provincial Park may be accessed on foot. For those who enjoy a short walk, view the Springer Creek Falls located alongside Springer Creek RV Park & Campground, or look at the longer falls

from the highway.

From Slocan, the 80 km (50 miles) Slocan Valley Rail Trail is a gentle, lightly graveled trail that travels through a delicately beautiful area ending at the junction of Highways 6 and 3A.

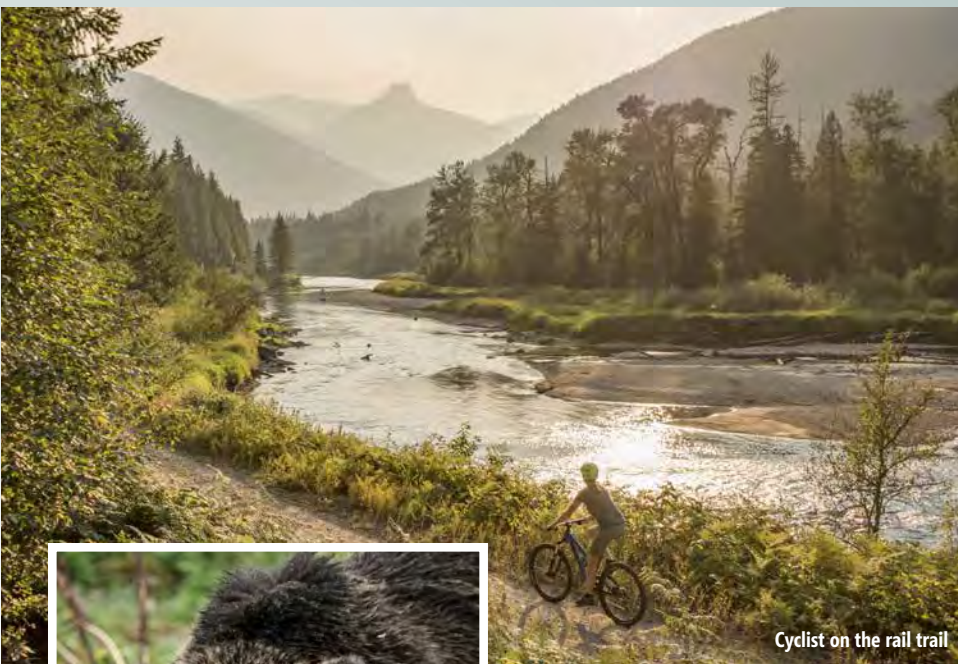
The village of **Winlaw** lives up to its reputation of being the hip epicenter of the Slocan Valley's diverse, rural lifestyle. Take a walk through the Winlaw Nature Park on boardwalks through marshlands with a riverside beach area, picnic tables and playground.

Highway 6 rejoins Highway 3A 16 km west of Nelson, returning to the main Selkirk Loop route.

Looking for a little peace and quiet, or a party? #VISITKASLO 
[.com](http://www.visitkaslo.com)



#PICTUREPERFECTKASLO



Cyclist on the rail trail



Bear near New Denver

FESTIVALS AND EVENTS NEW DENVER – SILVERTON – SLOCAN

May	New Denver May Days
July	Canada Day Celebration, Silverton Unity Music Festival, Slocan City
August	Columbia Basin Culture Tour
September	Garlic Festival, New Denver
December	Christmas by the Lake, Silverton Merchants Night, New Denver

Village of Slocan (250) 355-2277
New Denver Info (250) 258-7218

SILVERTON / SANDON RETAILLACK / NEW DENVER

ARTS, GIFTS & ANTIQUES

Valhalla Pure Outfitters - (250) 358-7755

GENERAL BUSINESS

Valley Voice - (250) 358-7218

ORGANIZATIONS & GOVERNMENT

Slocan District Chamber of Commerce
(250) 358-7276

PLACES TO STAY

Retallack Guides & Lodge (250) 354-5324
Valhalla Inn - New Denver (250) 358-2228

THINGS TO SEE & DO

Retallack Guides & Lodge (250) 354-5324
Sandon Museum/Sandon Historical Society -
(250) 358-7920 (summer) (250) 358-2604 (off
season)

SLOCAN CITY / WINLAW

ORGANIZATIONS & GOVERNMENT

Village of Slocan City
(250) 355-2277 • (866) 355-2023

PLACES TO STAY

Springer Creek RV Park & Campground
(250) 355-2266 • (866) 355-2023



View of Nelson

Nelson

Nelson is called the “Queen City” of the Kootenays and wins accolades from everyone who visits. Learn why Nelson continues to be called **the No. 1 small arts town in Canada** and to be named in the “top five small arts towns in North America.” The community of 10,000 is the largest town on the British Columbia side of the Selkirk Loop. The downtown area is packed with fine restaurants, cafes, coffee houses, local shops, small art galleries and impromptu theatre venues. Nelson also has regular farmers markets where local artisans can be found selling a unique and diverse variety of arts, crafts and imports, as well as locally grown and organic produce.

The West Kootenay region of British Columbia, where Nelson is situated, is the traditional territory of the Sinixt or Lakes First Nation. The area also has a significant Kutenai (Ktunaxa) presence.

These waterways form the beginnings of a water course traveling into and becoming part of the **Columbia River**, eventually spilling into the ocean in Astoria, Oregon. This was the elusive waterway that early explorer **David Thompson**, famous Canadian cartographer and fur trader for the Hudson’s Bay Company and

FESTIVALS AND EVENTS NELSON

January	Winter Carnival, Whitewater Ski Resort
February	Coldsmoke Festival, Whitewater Ski Resort
May-October	Cottonwood Saturday Market
May	Kootenay Artisan Fair
June-August	Tournament of Roses Golf Tournament
June-Sept.	Marketfest
June-Sept.	Downtown Local Market (Wednesdays)
July-August	Nelson Art Walk
July	Canada Day Celebration, Lakeside Park
	MS West Kootenay Glacier Challenge
	Fat-Tire Bike Festival
August	IDIDaRide-Run
	Columbia Basin Culture Tour
September	Queen City Cruise & Car Show
October	Wine & Food Festival
November	Kootenay Artisan Fair
December	Christmas on Baker

Nelson Visitor Info Centre
www.discovernelson.com • (877) 663-5706

North West Company, attempted to find in his quest to open a trade route to the Pacific Ocean.

Gold and silver were found in the area in 1867. Following the discovery of silver at nearby Toad Mountain in 1886, the town boomed quickly, leading to incorporation in 1897. Two railways were built to pass through Nelson. Due to its location near transportation corridors, Nelson grew to supply the local mining activity and soon became a transportation and distribution centre for the region.



Numerous downtown restaurants



Motorcycling the Loop

Kick it into gear - cycle the loop!

Explore via bike with A Cyclist's Guide to the International Selkirk Loop -

- Convenient ride segments
- Main route plus side trips
- Elevations and distances



\$19.95 at retailers or www.SelkirkLoop.org

The town soon matured from a false-fronted boomtown to a sophisticated city.

Francis Rattenbury, a noted architect, designed chateau-style civic buildings made of granite, which are still in use today. A native of England, Rattenbury spent much of his career in British Columbia and had previously designed the legislature building in Victoria. By the 1900s, Nelson boasted several fine hotels, a Hudson's Bay Company store and an electric streetcar system. The local forestry and mining industries were well-established. Because of the enduring charm of Nelson's historic buildings, the city has become known as the "**Heritage Capital**" of British Columbia.

The town built its own hydroelectric generating system in 1910. English immigrants planted lakeside orchards, and Doukhobors from Russia, sponsored by Tolstoy and the Quakers, tilled the valley benches. To relive history, take a tour of a restored Doukhobor village at nearby Castlegar.

Kootenay Lake was a marine performance centre for speedboats in the 1930s and '40s. In 1933, Nelson resident Lou Gilbert set the World Speed Record in his class at 68 mph, and his boat, the *Lady Bird*, can be seen today at Touchstones, Nelson's museum and gallery.



Streetcar 23

Guided walking tours to more than 350 heritage buildings or self-driving tours are a great way to revisit the architectural treasures from the city's heyday.

A heritage streetcar, Streetcar 23, (mid-May to mid-October) runs along the lakefront park, through the middle of the Chahko Mika Mall parking lot to the Prestige Lakeside Inn. Maps for downtown and residential walking tours are available at Nelson's Chamber of Commerce Visitor Info Centre.

Due to its scenery and unique streetscapes, Nelson has been the setting for many popular movies, including "Roxanne," starring Steve Martin and Daryl Hannah.

Nelson has both the terrain and the scenery that makes for fantastic hiking and biking. At least 10 trails exist close to the city. Two popular **hiking trails** are the Santa Fe Railway Trail, a gently sloped rail trail that runs across Nelson and allows biking; and the Pulpit Rock Trail that offers a short, but somewhat challenging hike ending in a beautiful view of the city. After Pulpit Rock, the trail continues up the spine of Elephant Mountain (as the locals call it) to more postcard views, and eventually to the radio towers visible from everywhere in the city. **Mountain biking** is part of the local



Ballet Performance at Capitol Theatre

Columbia Basin Culture Tour
July 29 & 30, 2023

Bernadette Fuhrmann

CULTURAL ALLIANCE Columbia Basin **trust**

250-505-5505 | www.cbculturetour.com



Unique shops and restaurants

culture, and Nelson offers a wide variety of fat tire-oriented trails for all levels of experience. Excellent trail maps are available at local bike shops. **Rock climbing** is also a popular summer activity. Kootenay Crag, Hall Siding, Grohman Narrows and CIC Bluffs are popular city crags.

Just south of Nelson is **Whitewater Ski and Winter Resort** and **Apex Nordic** area, offering world-class alpine and Nordic skiing, snowboarding and endless terrain nearby for backcountry touring and snowmobiling. The area offers more than 20 cat-skiing, heli-skiing and ski-touring operators and hundreds of kilometers of cross-country trails. For more information on all of the area's activities, stop into the **Nelson Visitor Information Centre** located on Baker Street in the restored trail depot.

If golf is your game, Nelson's **Granite Pointe Golf Club**, only minutes from downtown, is an 18-hole course that tests abilities while offering spectacular scenery. The view from the 16th tee box alone is worth the price of admission, so don't forget your camera. **Seven more outstanding courses lie within a one-hour drive of Nelson.**

For just plain relaxing with the kids, Nelson's **Lakeside Park** has a lifeguard-supervised sandy beach. Kayaking, rafting and canoeing can also



Fair Trade • Natural Fibre • XS-4X
Clothing for Every Body ♥



Visit us at

511 Baker Street, Nelson &
350 Ferry Landing Road, Balfour (seasonally)
or online at blueskyclothingco.com



CYCLE THE SELKIRK LOOP

Washington - Canada - Idaho

September 11-16, 2023



Breathtaking Scenery
370 Miles / 595 Km
Best Support of Any Ride
An Amazing Adventure!

WaCanId.org 1.888.823.2626



Children enjoying ArtWalk

be enjoyed from the lakeshores surrounding Nelson.

Nelson has a multi-purpose **Aquatic Centre**, including a **waterslide** and expanded fitness area. Be sure to visit **Touchstones Nelson Museum of Art & History** (open year-round) located on Vernon Street and the beautifully restored **live-performance Capitol Theatre**.

South of Nelson on Highway 3A, take the **Rivers, Dams and Mines Super Side Trip** (page 70). A fun day of exploring the towns of Castlegar, Trail and Rosland are worth the drive. Castlegar is the site of the closest **regional airport** on the west side of the Kootenays.

Driving the loop is for the birds!

Hit the road with the Birder's Guide to the International Selkirk Loop -

- Explore 40 key birding sites
- Best places to view
- Best seasons
- Waterproof paper



\$7.95 at retailers or www.SelkirkLoop.org

BUSINESS DIRECTORY

ARTS, GIFTS & ANTIQUES

- Capitol Theatre (250) 352-6363
- Cottonwood Kitchens (250) 352-9777
- Craft Connection Co-Operative (250) 352-3006
- Touchstones Nelson: Museum of Art and History (250) 352-9813

FOOD & EATERIES

- Adventure Hotel (250) 352-7211 • (888) 722-2258
- Best Western Baker Street Inn & Convention Centre (250) 352-3525 • (888) 255-3525
- Hume Hotel (250) 352-5331 • (877) 568-0888
- Main Street Diner (250) 354-4848
- Prestige Lakeside Resort & Convention Centre (250) 352-7222 • (877) 737-8443
- Whitewater Ski Resort (250) 354-4944 • (800) 666-9420

GENERAL BUSINESS

- Blue Sky Clothing Company (250) 354-0101
- Cottonwood Kitchens (250) 352-9777
- Snowpack Outdoor Experiences / Patagonia Outlet (250) 352-6411 • (877) 669-7225

ORGANIZATIONS & GOVERNMENT

- Nelson & District Chamber of Commerce (250) 352-3433 • (877) 663-5706
- Nelson Electric Tramway Society (250) 367-9564 • (877) 367-9564
- Nelson Kootenay Lake Tourism Society (250) 352-7879 • (877) 663-5706

PLACES TO STAY

- Adventure Hotel (250) 352-7211 • (888) 722-2258
- Alpine Motel (250) 352-5501 • (888) 356-2233
- Best Western Baker Street Inn & Convention Centre (250) 352-3525 • (888) 255-3525
- Dancing Bear Inn (250) 352-7573 • (877) 352-7573
- Hume Hotel (250) 352-5331 • (877) 568-0888
- Kokanee Creek Provincial Park (250) 551-0100
- Kokanee Glacier Resort (250) 825-9421 • (877) 825-9420
- Mistiso's Place Guest House (250) 354-8085
- Mountain Hound Inn (250) 352-6490 • (866) 452-6490
- Nelson Municipal Campground (250) 352-7618
- Prestige Lakeside Resort & Convention Centre (250) 352-7222 • (877) 737-8443

THINGS TO SEE & DO

- Capitol Theatre (250) 352-6363
- Chahko-Mika Mall (250) 354-4496
- Columbia Basin Culture Tour (250) 505-5505
- Granite Point Golf Club (250) 352-5913
- Kokanee Mountain Zipline (866) 358-8688
- Nelson Electric Tramway Society (250) 367-9564 • (877) 367-9564
- Reel Adventures Fishing Charters (250) 505-4963
- Touchstones Nelson: Museum of Art and History (250) 352-9813
- Whitewater Ski Resort (250) 354-4944 • (800) 666-9420



Chapel House on Zuckerberg Island



Castlegar
Fruitvale/Montrose
Rossland · Trail
95 MILES / 153 KM

Castlegar is located at the confluence of the Columbia and Kootenay rivers and features many excellent heritage sites to visit. Stop by the **Station Museum** (Victoria Day-Labour Day Weekend), located in the downtown district, to view one of the best preserved railway station museums in British Columbia. Stroll over the suspension bridge to **Zuckerberg Island Heritage Park** for a self-guided tour (April-October) or stop in at the re-created **Doukhobor** (pro-

nounced *duke-ho-bore*) **Discovery Centre** (May 1-Sept. 30), situated on Highway 3A just north of Castlegar, with 10 buildings from the turn-of-the-20th century pacifist sect from Russia. Regional art can be viewed at the **Kootenay Gallery of Art, History and Science**.

Cycle all or part of the 152-km, or 91.2-mile, **Kettle Valley Railway Bike Route or Pathway Trail** that ultimately leads all the way to Christina Lake and Grand Forks on an easy, unpaved railway grade. Allow four days for the entire route, which passes through seven tunnels and over 10 spectacular trestles. Camp northwest of Castlegar on the eastern shores of the Lower Arrow Lake at **Syringa Provincial Park**. Rocky Mountain bighorn sheep, elk and mule deer are common.

Rossland is often called Canada's Alpine

ASK FOR THE
SELKIRK LOOP RATE!

EXPLORE THE WONDERS OF TRAIL BC

Stay With Us and Experience Our Award Winning Friendly Service

BW Best
Western
PLUS

AWARD WINNING

COLUMBIA RIVER HOTEL
 TRAIL BRITISH COLUMBIA

1001 ROSSLAND AVE
 1.800.465.6682

BESTWESTERNTRAIL.COM



2769 GLENWOOD DR
 1.800.667.9544

GLENWOODINNANDSUITES.COM



Mountain biking near Rossland

City and is renowned as the “**Mountain Biking Capital of the World**.” It may be one of Canada’s highest cities at 4,000 feet. Pick up a trail map at the local visitor centre. The International Mountain Biking Association has recognized the **7 Summits Trail** as one of its epic rides. The 7 Summits Trail follows the alpine ridges of the Rossland Range for 25 km, or 15 miles, of spectacular scenic hiking or mountain biking.

Rosland’s wealth began with the legendary LeRoi Mine, which produced phenomenal amounts of gold. Stop by the **Rosland Historical Museum** to see a video of the **LeRoi Mine** (mid-May to mid-September), **Canada’s only historic hard rock** gold mine. Try your hand at gold panning and view the spectacular displays at the **Geology Centre**.

Rosland’s **Red Mountain Resort** is a first-rate ski mountain. Many famous alpine athletes came from the region and are highlighted at the **Western Ski Hall of Fame**.

Visit **Trail** and discover its rich mining history, still evident today. The original smelter was built in 1896 on the banks of the Columbia River to process this ore. Today, that smelter has grown to become Teck Cominco, the world’s largest zinc and lead smelter. Visit the **Teck Cominco Interpretive Centre** (Victoria Day-Labour Day Weekend) and take a **free, two-hour guided tour** at 10 a.m. Monday through Friday.

FESTIVALS AND EVENTS CASTLEGAR

March	Fly Fishing Symposium
June	Sunfest Community Celebration
July	Bluegrass Jamboree Kootenay Festival
July-August	Artwalk & Sculpture Walk Concerts in the Park Series
July-Sept	Farmers Market
August	Columbia Basin Culture Tour
September	Pass Creek Fall Fair & Horse Show
December	Winterfest

Castlegar Chamber

www.castlegar.com • (888) 365-6313

CASTLEGAR / FRUITLAND

FOOD & EATERIES

Castlegar Golf Club and RV Park
(250) 365-7732 • (800) 666-0324

Sandman Hotel
(250) 365-8444 • (800) 726-3626

ORGANIZATIONS & GOVERNMENT

Castlegar & District Chamber of Commerce
(250) 365-6313 • (888) 365-6313

PLACES TO STAY

Castlegar Golf Club and RV Park
(250) 365-7732 • (800) 666-0324

Champion Lakes Provincial Park (250) 551-0100

Sandman Hotel
(250) 365-8444 • (800) 726-3626

Syringa Park Provincial Park
(250) 551-0100

THINGS TO SEE & DO

Castlegar Golf Club and RV Park
(250) 365-7732 • (800) 666-0324

Doukhobor Discovery Centre
(250) 365-5327



Little McPhee Falls



Panning for Gold at Rossland Museum

Follow Highway 3B east of Trail to the villages of **Montrose** and **Fruitvale** to stock up on supplies before heading to **Champion Lakes Provincial Park**. Try camping at the third lake. Highway 3B rejoins Highway 6 at the Salmo Junction. Turn south and follow the Salmo River 25 km (15 miles) to the international border crossing at Nelway/Metaline Falls, open 8 a.m. to midnight.



**FESTIVALS AND EVENTS
ROSSLAND**

January	Blizzard Music Festival Rossland Winter Carnival
June - Oct	Farmers Market
July	Broken Goat - Trail Run
August	Huck'en Berries Bike Jam
September	Rossland Fall Fair Golden City Days
November	Rossland Mountain Film Festival
December	Rekindle the Spirit of Christmas

Tourism Rossland
www.tourismrossland.com

- **ROSSLAND**
- **FOOD & EATERIES**
- **Prestige Mountainside Resort** (250) 362-7375 • (877) 737-8443
- **Red Mountain Resort** (250) 362-7384 • (800) 663-0105
- **PLACES TO STAY**
- **Josie Hotel (The)** (250) 362-5155
- **Prestige Mountainside Resort** (250) 362-7375 • (877) 737-8443
- **Red Mountain Resort** (250) 362-7384 • (800) 663-0105
- **Sure Stay Hotel by Best Western Red Rossland**
- **Red Mountain** (250) 362-7364
- **THINGS TO SEE & DO**
- **Red Mountain Resort** (250) 362-7384 • (800) 663-0105
- **Rossland Museum & Discovery Centre** (250) 362-7722 • (888) 362-7722
- **ORGANIZATIONS & GOVERNMENT**
- **Tourism Rossland** (250) 362-5666



Columbia River



Grapes at Columbia Gardens Winery

FESTIVALS AND EVENTS TRAIL

May	Silver City Days
May-August	Teck Cominco Tours
June	W. Kootenay Smoke & Steel Car Show
June-August	Music in Gyro Park, every Thursday
December	Silver City Night and Candy Parade

Trail & District Chamber of Commerce
(250) 368-3144
trailchamber.bc.ca

TRAIL

ARTS, GIFTS & ANTIQUES

Columbia Gardens Vineyard & Winery
(250) 367-7493

FOOD & EATERIES

Best Western Plus Columbia River Hotel
(250) 368-3355 • (800) 465-6682
Colander Restaurants, Ltd. (250) 364-1816
Columbia Gardens Vineyard & Winery
(250) 367-7493

ORGANIZATIONS & GOVERNMENT

Trail Visitor Centre (250) 364-0829

PLACES TO STAY

Best Western Plus Columbia River Hotel
(250) 368-3355 • (800) 465-6682
Columbia Gardens Vineyard & Winery
(250) 367-7493
Crown Columbia Hotel Best Western Premier
(250) 362-368-3296
Glenwood Motel
(250) 368-5522 • (800) 667-9544

THINGS TO SEE & DO

Columbia Gardens Vineyard & Winery
(250) 367-7493

Come twirl with us
ITALIAN FAMILY STYLE DINING
Shopping at the Mall?
Visit The Colander Express

Dinner Hrs: 4:30 - 8:30 daily
Lunch Hrs: 11:30 - 2:00 week days

RESERVATIONS: **364-1816**
1475 Cedar Ave., Trail

Colander restaurant
MasterCard VISA



Cycling on the Great Northern Trail

Salmo • Ymir

Considered the hub of the Kootenays, located at the crossroads of Highways 3B and 6, the tale of **Salmo** is chronicled in a most unique fashion. Seven elaborate stone murals paint a picture of the community's mining and forestry heritage – all created by students from **Salmo's Kootenay Stone Masonry Training Centre**.

Every year in August, the annual Shambhala Music Festival, an internationally known music festival, is held at the Salmo River Ranch.


Cyclists love the abandoned Burlington Northern Railroad line that has been converted to a **"rails to trails" route, the Salmo-Troup Trail**. A scenic, fat tire route, the trail extends 48 km, or 28.8 miles, south from Nelson to Salmo. This stretch of trail is part of a much more extensive proposed system of trails known as **"The Kootenay Loop"** which connects to the **Trans Canada Trail** network in three locations. The Salmo-Troup Trail is surrounded by mountains, clear, pristine streams and rivers, and many small scenic lakes and marshlands. It is a natural haven for a variety of wildlife and passes through the historic settlement of Ymir, a former mining town, to Summit, and then descends past **Cottonwood Lake Regional Park**, to form the southeastern boundary of the City of Nelson.

Salmo Ski Hill provides thrills, as it is famous for night skiing on fully lit runs with small lift lines.

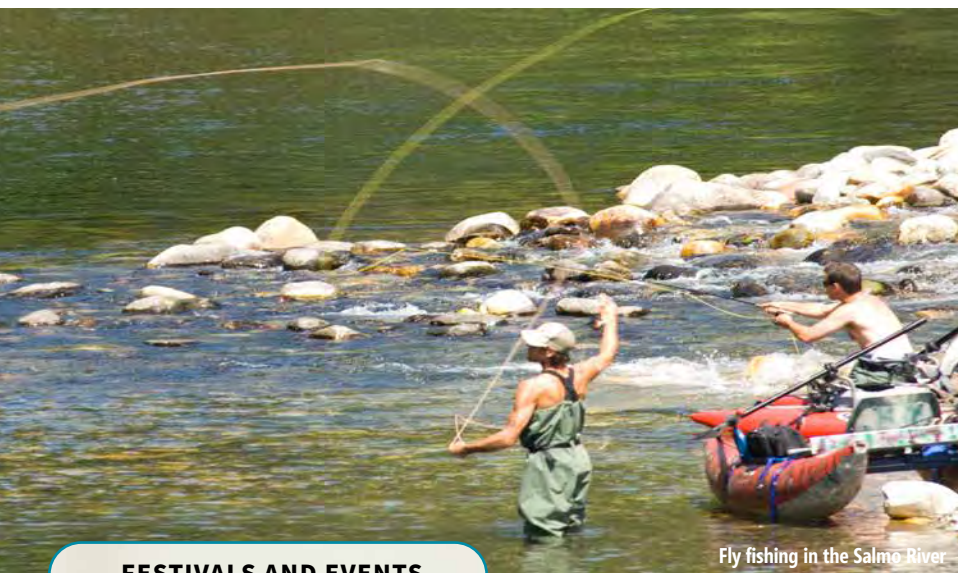
Follow Highway 3 east of Salmo toward Creston for a good opportunity to view bighorn

sheep near the top of Kootenay Pass. Stop and breathe that pure, alpine air at **Stagleap Provincial Park**, one of the most accessible backcountry parks in British Columbia. It is at the summit (1,774 meters or 5,820 feet) of one of the **highest paved highways in Canada**.

Between Salmo and Nelson on the Salmo River is the tiny community of **Ymir** (pronounced *why-mer*), and this little treasure is complete with a small, rustic camping park right in town. For a glimpse of Ymir's rich and colorful mining past, visit the historic **Hotel Ymir & Saloon**. Operating since 1896, it has the distinction of being the oldest, continuously run establishment in the region. The grand, old lady has gone through many loving restorations. You can also wander down the main street to the **General Store** and



Oldest Phone Booth
 Wellness Centre
 Fishing
 Family Ski Hill
 Trails
 Schools
 Swimming
 Campground
 Curling Rink
 Great Rail Trail
 Stone Murals
 Library
 Bike Skills Park
 Hiking
 ATVing
Salmo
 Hub of Kootenays
 River Rafting
 Adventure
 Eric Creek
 www.salmo.ca



Fly fishing in the Salmo River

FESTIVALS AND EVENTS SALMO / YMIR

June	Tiny Lights Festival - Ymir
June-Sept.	Farmers Market - Salmo (Thursdays)
July	Salmo Celebrations - Salmo
August	Shambhala Music Festival - Salmo

Salmo & District Chamber
(250) 357-2596
discoversalmo.ca

see visible mine shafts in the area.

The Salmo River runs through the town as does the **"rails to trails" route**. Enjoy many outdoor activities while staying in this charming area. Ymir promises a "wild and woolly" time.

Just west of Salmo on Highway 3B is the Selkirk Loop's **Rivers, Dams and Mines Super Side Trip** (page 70).

BUSINESS DIRECTORY

FOOD & EATERIES

• **Salmo Hotel** (250) 357-9414

GENERAL BUSINESS

• **Salmo People's Drug Mart** (250) 357-9444
• **Salmo Pump** (250) 357-2227

ORGANIZATIONS & GOVERNMENT

• **Village of Salmo** (250) 357-9433

PLACES TO STAY

• **Hotel Ymir** (250) 357-9611
• **Salmo Hotel** (250) 357-9414
• **Selkirk Motel & RV Park**
(250) 357-2346 • (888) 368-6336

THINGS TO SEE & DO

• **Salmo Ski Area** (250) 357-2323

CAMPING ON PUBLIC LANDS - WEST KOOTENAY AREA, B.C.

SITE	LOCATION	SITES	TENT	SHOWERS	RV FULL/LIMITED
Kokanee Creek-PP*	Nelson	132	x	x	Limited
Kokanee Glacier-PP-hike in	Nelson	20	x	n/a	n/a
Valhalla-PP-boat in or hike in	Slocan	35	x	n/a	n/a
Rosebery-PP	Rosebery	36	x	n/a	Limited
Lost Ledge & Davis Creek-PPs	Kaslo	32	x	n/a	Limited
Syringa-PP*	Castlegar	60	x	n/a	Limited
Champion Lakes-PP*	Salmo	89	x	n/a	Limited
Stagleap-PP	Salmo	5	x	n/a	n/a
Beaver Creek-PP	Trail	19	x	x	Limited

* Reserve at www.discovercamping.ca 800-689-6850 / PP-Provincial Park / FRS-Forestry



Red Mountain Ski Resort

Winter on the Selkirk Loop is a blast...

You'll find that there are a wide variety of winter activities to satisfy every member of the family. Well-maintained roadways in the winter means that access to the Selkirk Loop's winter playgrounds is possible even with front-wheel-drive vehicles equipped with all-season tires. The driving elevation of the highways ranges from 1,800 feet to 2,500 feet.

The Selkirk Mountain Range averages **25 feet of snow** at higher elevations, starting in late October through early April. Outdoor enthusiasts are thrilled to find groomed Nordic trails, snowmobile trails and **six exceptional ski resorts** as well as a number of backcountry options for skiing and snowmobiling adventures. Many of the communities also offer ice skating (indoors and out) as well as curling rinks and hockey.

In Idaho, visit the Priest Lake area to travel more than 400 miles of groomed snowmobile trails, taking you to beautiful vistas and magnificent bowls into a public land area of 500,000-plus acres of off-trail riding. The area also has more than 70 kilometers of groomed Nordic trails on six separate trail systems. Maps can be found on the Priest Lake, ID app.

Schweitzer Mountain Resort at Sandpoint is winter recreation central. It's one of the Northwest's largest ski resorts. Skiers and boarders enjoy being whisked on three high-speed chairs and choosing from 92 named runs. Try a **snowshoe hike** complete with a guide. Visit Hermits Hollow for loads of tubing fun. There are 32 kilometers of groomed Nordic trails as well as plenty of non-skiing activities for the whole family.

For extra helpings of winter fun, **Selkirk Powder Guides** offers cat skiing, heli-skiing, snowmobiling and sightseeing tours on thousands of acres in the Selkirk mountains near Schweitzer.

In Washington, only an hour from Spokane, **49 Degrees North** has 75 marked trails for skiers and boarders and 16 kilometers of groomed **Nordic trails** plus an additional 25 kilometers at the **Terrain Park**. Nordic ski the groomed Geophysical and Wolf trails, north of Newport, which offer numerous set tracks and skating decks for all levels of skill.

East of Usk are the popular **Sno-Park areas** of Bead Lake, Kings Lake and North/South Baldy with **access to 132 miles of groomed roads for snowmobilers**. There are **three Sno-Parks** in the **Gillette Recreation Area** west of Lone boasting 213 miles of groomed trails.

In Montana, just 22 miles outside of Libby, you will find undisturbed powder at **Turner Mountain**. Ski Magazine totes this ski area as the "best lift assisted powder in the US," with 2,110



Schweitzer Mountain Resort

vertical drop and 22 named runs for your enjoyment. They are open Friday - Sunday or you can **rent the entire mountain** for a private gathering on Thursdays.

You can also find 200 groomed trails in the area offering 1,000 miles of fun for snowmobiles, cross-country skiing or snowshoeing. Contact the local visitor center for directions to these hidden gems.

In British Columbia, Nelson's **Whitewater Ski Resort** boasts a 1,300-foot drop from more than 6,700 feet and an average **40 feet of dependable powder**. They offer 82 named alpine and Nordic runs and a backcountry touring program in a safe, controlled environment. At **Red Mountain Ski Resort** in Rossland, visitors

can choose from 110 runs spread across **three stellar mountains** that feature everything from wide-open groomers to steep, powder-filled glades. There is a lot to explore at RED.

Several snowcat operators exist in the area, plus plenty of indoor and outdoor skating and hundreds of miles of snowmobile trails. South of Nelson on Highway 6 are the **Clearwater Creek Cross-Country Ski Trails**, an extensive system of groomed trails maintained by the Nelson Nordic Ski Club, and the **Apex Busk Cross-Country Area**. Hate lift lines? **Salmo Ski Hill** is a local alpine area that offers a nice, uncrowded change with T-bar and handle-pull lifts. It is also famous for its **great night skiing** on fully lit runs that are groomed to perfection.

TURNER
MOUNTAIN
LIBBY, MONTANA

WWW.SKITURNER.COM
OPEN FRI-SUN
9:30A-4:00P



Heli-Skiing

The deep powder and terrain of this B.C. region is home to **five local cat ski operators**: Baldface, Selkirk Snowcat Skiing, Retallack, White Grizzly and Valhalla Powder Cats. Together, they have earned the designation as the **Cat Ski Capital of the World**.

The **deep snow** and **steep vertical** attracts pro skiers, snowboarders, heli-skiers and ski-touring fanatics from around the world. Enjoy **decadent dining**, and **comfortable accommodations** in the lodges on the mountains or in the nearby towns. Does it **sound a bit like heaven**? Well... it is.



Horse drawn sleigh ride



SCHWEITZER
SANDPOINT, ID

Uncrowded
Easy Access
Incredible Terrain
schweitzer.com



509.935.6649
ski49n.com

49°North
MOUNTAIN RESORT
CHEWELAH, WASHINGTON

Facebook, Twitter, UAS logos



Cat Skiing



Cross country skiing

Whitewater
Ski Resort · Nelson BC

SKIWHITEWATER.COM

BUSINESS DIRECTORY

WASHINGTON

- **49 Degrees North** Chewelah (866) 376-4949
- **Gillette Recreation Area** Lone (213 miles of groomed trails)
- **Sno-Park Areas** Usk (132 miles of groomed trails)

IDAHO

- **Priest Lake Chamber of Commerce** (400 miles of groomed trails) (888) 774-3785
- **Schweitzer** (208) 267-8511 • (800) 346-5668
- **Selkirk Powder Guides** (heli-skiing, snowmobiling, snow cat skiing) (208) 263-6959
- **Skating in Bonners Ferry** (synthetic covered skating rink) (208) 267-5922
- **Western Pleasure Guest Ranch** Sandpoint (old fashioned sleigh rides) (208) 263-9066

MONTANA

- **Libby Chamber of Commerce** (1000 miles of groomed trails) (406) 293-4167
- **Turner Mountain** Libby (406) 293-2468

BRITISH COLUMBIA

- **Clearwater Creek Cross-Country Ski Trails** (877) 663-5706
- **Salmo Ski Hill** Salmo (250) 357-2323
- **RED Mountain Resort** Rossland (250) 362-7384 • (800) 663-0105
- **Retallack Guides and Lodge** (snow cat skiing) Retallack (250) 354-5324
- **Salmo Ski Hill** Salmo (250) 357-2323
- **Whitewater Ski Resort** Nelson (250) 354-4944 • (800) 666-9420



The International Selkirk Loop

P.O. Box 920
Bonners Ferry, ID 83805

Return Service Requested

**PRSRT
STD**

U.S. POSTAGE PAID
Bonners Ferry, ID
PERMIT NO. 149



NELSONKOOTENAYLAKE.COM
#FindingAwesome

Photo: Jesse Schpakowski

Self-Guided Audio Tours

**KOOTENAY
LAKE ROAD TRIP** 
OUR TIPS • YOUR TRIPS **APP**



Ainsworth Hot Springs | Balfour | East Shore | Kaslo | Nelson | North Kootenay Lake

www.SelkirkLoop.org / 888-823-2626